

Thank you for purchasing CISS TM ColorWay. We appreciate your support and we do our best for convenient usage of our products.

Continuous Ink supply system

Continuous ink supply system (CISS) is a device that is used for massive printing volumes, such as color copying, instant printing and other promotional materials printing. Systems are ideal for home and work operation.

CISS represents a device, which consists of ink tanks with inks, linked with multichannel silicon tube with cartridges, identical to the original ones. CISS ColorWay uses high quality inks TM ColorWay.

CISS advantages: volume of donor ink tanks is in 10 - 20 times bigger than the regular cartridges; there is no necessity to eject cartridges from printer during refilling, the air does not enter to the printhead, prolonging it's life. And as we know, it's the most expensive part of device; huge savings, more than in 20 - 40 times!

Box content:

1. Ink tanks with plugs (5 colors) – 1 set.
2. 5 channel silicone tube – 1 pc.
3. Silicone tube holder "Clip" - 3 pcs.
4. A straight silicone tube clincher – 1 pc.
5. T-shaped clincher – 1 pc.
6. Cartridges set (5 pcs) with chips – 1 pc.
7. Rubber lining for cartridges – 1 set
8. Air filters – 5 pcs.
9. Syringe – 5 pcs.
10. Needle – 5 pcs.
11. Gloves – 1 pair.
12. Ink tanks clincher – 2 pcs.
13. Installation instructions – 1 pc.

The exterior product view and bundling may differ. Drawings and photos are presented in the manual to understand the general installation and operation process of the CISS. The manufacturer reserves the right to change product specifications, designs and bundling without prior notice.

Inks optionally: code-0.0 - (without inks), code-5.5(P) - (5 bottles of inks and each 50 ml(P-with one pigment ink)), code-5.1(P) - (4 bottles of inks and each 100 ml(P-with one pigment ink))



1. Installation preparation

Installation of CISS requires technical information how to install it so we advise you to read instruction before installation.

Before installation please check the whole system and box content.

During the period of CISS usage please do not touch chips and printing heads of original cartridges, do not let dust and liquids to make them broken.

1.1. Before installation of CISS makes sure the printer is in working condition: make sure the printer works well with original cartridges and paper supply mechanism is fine. If the printer is new and it is been never used before so please go to p.1.4.

1.3. Colors sequence of cartridge bloc and external ink tanks may vary. Before installation and filling of CISS it is necessary to check the accuracy of colors sequence, for this check the printer carriage and compare with cartridges bloc and external ink tanks. If it is necessary replace stickers that refer to colors on tanks and rubber caps in respective sequence. Also it is necessary to replace cartridge

Reminder! The fact that in a printer is used non original consumables can be used as a reason of warranty cancellation.
Make sure that your printer is compatible with this system (list of compatible printer models is on a side label of box).

in accurate sequence, for this remove connector that is connected with silicone tube from the cartridges, put cartridge in the accurate place and get connector back.

1.3. Please print test page to evaluate printer ability to work.

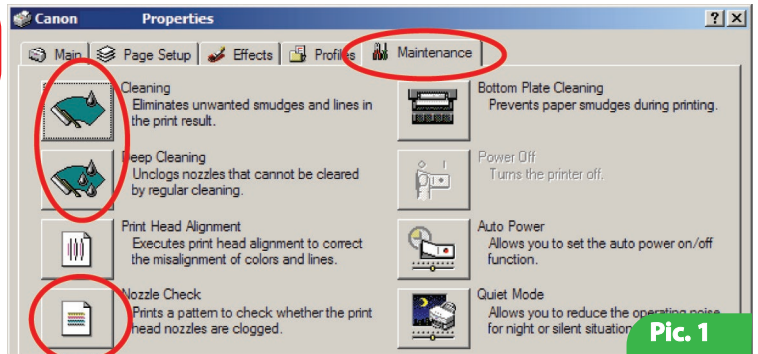
Start / Control panel/ Printers and Fax/Choose printer / Printer adjustment / Maintenance / Nozzle Check

If test is positive so please start CISS installation.

If result is negative so please follow the recommendations on cleaning printing head via software of printer (Pic. 1) Service, button Cleaning, deep cleaning, if this does not bring positive effect so please replace broken cartridge to a new one.

1.4. Get straight a silicone tube, it should be in fine working condition. Let CISS to lie for a while for getting room temperature.

1.5. All procedures are recommended to be organized in a way to avoid getting inks on furniture, floor and clothes



Pic. 1

Attention! If previously you have been using low quality inks or you change now pigment inks into dye inks or dye inks into pigment inks. In this case please clean a printing head before printing with a special cleaning liquid. If you have been using original inks or inks of TM ColorWay in this case no need to clean printing head. TM ColorWay inks is completely compatible with original inks and during installation of TM ColorWay CISS no need to clean printing head.

2. Ink tank refilling

PLEASE NOTE: INK VERY BADLY WASHED OFF, PLEASE ORGANIZE ALL THE PROCEDURES VERY CAREFULLY!

INK CAN RUIN YOUR FURNITURE AND CLOTHES; MAKE SURE THAT YOUR WORKING SPACE AND CLOTH ARE NOT CHERISHED.

Fill in the ink tanks as it shown on Pic. 2:

2.1. Plug small aperture with the rubber;

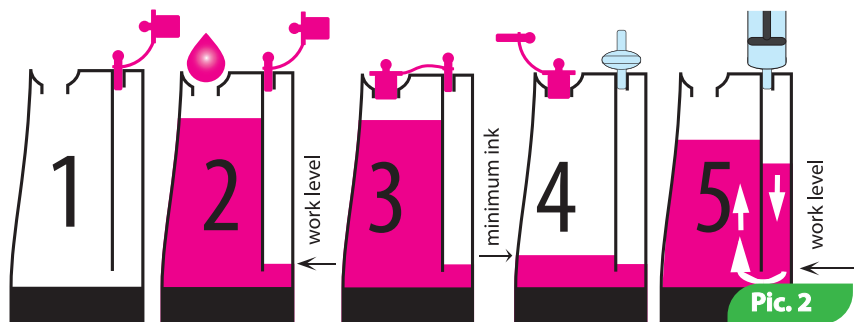
2.2. Inject ink through the big aperture;

2.3. Plug the big aperture;

2.4. Unplug the small aperture, insert the air filter;

2.5. In case big apertures weren't plugged, ink level in both chambers will become equal. In this case you have to unplug both chambers, insert the syringe with pulled back plunger into the small aperture. Carefully push the syringe plunger down, injecting the air into the small chamber and transferring ink into the big chamber. Than plug the big aperture (Pic. 2 – images 5).

In-service ink tanks should be correctly filled-in: please pay attention to operating level of ink in small chamber – it should be minimal.



Pic. 2

Note: Do not place ink tanks higher than level of cartridges (printing head) it may cause leakage. Due to excess pressure ink flows into the printer and may spoil printing head and electronic contacts. Keep the ink tanks on the same level with the printer. The air filters (membrane) should be clean and dry. If the air filter is moisten with ink or any other liquid – it stops passing the air and CISS stops working properly (the missing colors are observed on printouts). In this case it'll be better to take filter away and use the CISS without it.

3. System Pumping

During the first installation of system it is important to organize its pumping: fill a silicone tube and cartridges with ink.

3.1. Take one of the system cartridge and turn it in a way cartridge nozzle is up (Pic. 3), then remove orange cap from the cartridge (Pic. 4). During pumping the nozzle should be up all the time.

3.2. Remove air filter from the small hole if external ink tank.

3.3. Put an air in a syringe and then put it in a small hole of external ink tank.

3.4. Slowly put an air in a tank (during this a large hole should be closed). You can see how ink flows from silicone tube to the cartridge. When cartridge is filled completely with ink and cartridge nozzle gets the respective color you may stop pumping (Pic. 5, 6, 7) If it is necessary you may pull a bit a syringe plunger (1 cm) in order to remove excessive ink.

3.5. Put an orange cap on the cartridge (Pic. 8). After close the small hole of external ink tanks.

3.6. Take a clean syringe and pump in the same way other cartridges.

If it hard or too easy to pull syringe plunger so in this case please check a silicone tube from ink tanks to cartridges, it should be fine and shouldn't be overturned or bended.

Don't get too high or low cartridges over ink tanks during installation since it may cause outflow or excess. If it is necessary to make you may pinch a silicone tube with binder.



Pic. 3



Pic. 4



Pic. 5



Pic. 6



Pic. 7



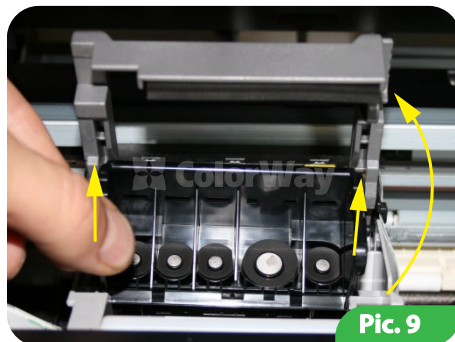
Pic. 8

For re-injection of the system when cartridges of CISS are empty or foam rubber is filled with ink.

- 3.7. Get ink in a syringe of respective color and put on a needle on a syringe.
- 3.8. Bend a silicone tube in order to avoid ink pouring from the ink tanks.
- 3.9. Disconnect L-shaped connector with silicone tube from the cartridge. During this an orange cap should be on the cartridge.
- 3.10. Through the filling hole slowly fill the cartridge in a way a rubber foam absorbs all ink until cartridge is full.
- 3.11. Connect L-shaped connector with silicone tube to the cartridge.
- 3.12. If it is necessary please repeat pumping for other cartridges and then undench a silicone tube.

4. CISS installation preparation.

- 4.1. Switch on a printer. Put a cap that closes cartridges in the printer or scanner cap in MFU. Wait until the carriage moves out from the position Parking (extreme right position) and stops in the middle in position Cartridge replacement. After pull out the power cable from the socket, with a help of this you make free printing head from the parking mechanism and you can move it easily with your hand.
- 4.2. If it is necessary pull out cartridges from the printer. Do not throw away original cartridges since you may need them if it necessary to dismantle CISS or to check printer workability.
- 4.3. Pull out printing head from the printer (MFU). (Pic. 9). After lay it on the tissue in order not to harm nozzle plate.
- 4.4. Install rubber gaskets on the nozzles of carriage (Pic. 10; 11). Do not remove black original gaskets, make sure there is not dust and dirt on them.
- 4.5. Install printing head with installed gaskets back to the printer (MFU). Make sure the contact group of printing head is clean and there is no ink and other liquids on it.
- 4.6. Before installation of cartridges bloc pay your attention to the moment that a silicone tube should be fixed strictly athwart to the holder on the cartridge (Pic. 12). If a silicone tube is not fixed strictly athwart (Pic. 13), there is a possibility of silicone tube holder extraction on the cartridge that can lead to carriage block. A holder of silicone tube on the cartridge bloc has to fix properly a silicone tube and does not let it to hang out.
- 4.7. Remove plastic orange caps from the CISS cartridges (Pic.14).



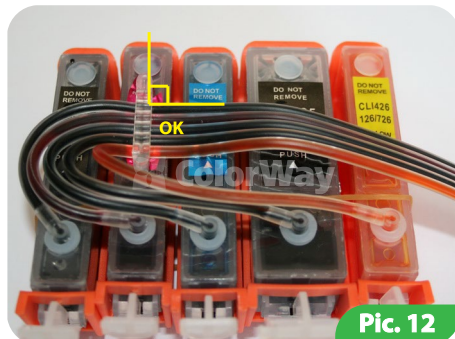
Pic. 9



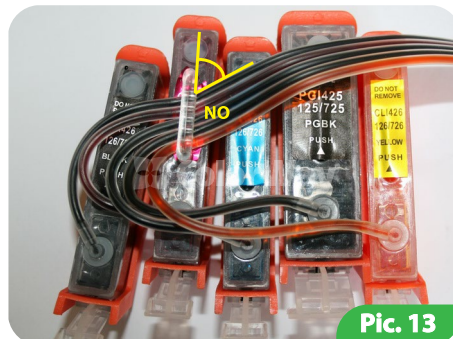
Pic. 10



Pic. 11



Pic. 12



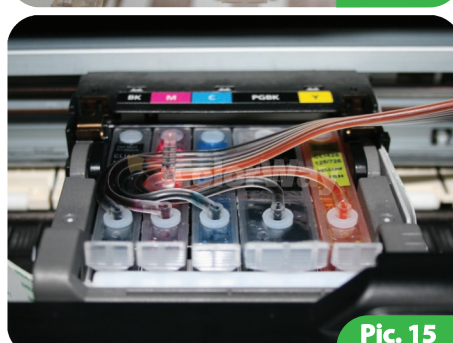
Pic. 13



Pic. 14

- 4.8. Install cartridge bloc in a printer (Pic.15). Cartridges should be standing properly on their places and be installed until click. A silicone tube on the top of cartridge bloc shouldn't obstruct the carriage movement, if it is necessary fix the length of silicone tube.

- 4.9. Remove a binder and get straight a silicone tube. (Pic.16).



Pic. 15



Pic. 16

Due to different internal construction of printers and MFU, below is described various ways of silicone tube fixation for MFU and printers.



Before you start to fix the tube, you need to clearly understand the principle of its movement during the printer operation, as well as to understand the basic fixing principles:

Rule № 1: The length of the tube should be enough for free movement of the printhead from the extreme right – to the extreme left position;

Rule № 2: The tube can bend and touch the printer itself during the moving of print head, but the tube should not get stuck between moving and stationary printer parts!

A silicone tube fixation for MFU Canon.

5.1. For the correct work of CISS T-shaped holder needs to be bended a bit. (Pic. 17). In order to do so please make it warm with help of lighter.

5.2. Put a silicone tube in T-shaped holder and stick it to the MFU body, a bit left from the center of paper pick up roller. (Pic. 18).

For better fixation of 2 side scotch tape it is recommended to degrease the surface of taping with alcohol content liquid.

5.3. Attach to the T-shaped holder a lower part of U-shaped holder, that is additional stop for the scanner cap. (Pic. 19).

5.4. Move gently a carriage with your hand from the extreme right to the extreme left position and a silicone tube should be moving without overturning, if it is necessary please fix the length of silicone tube. Further use of printer with CISS depends on the accuracy of silicone tube fixation and all other rules fulfillment.

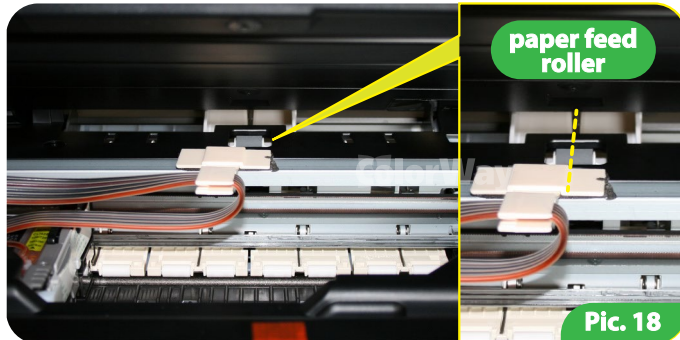
5.5. Fix a silicone tube with U-shaped clips in places marked on Pic. 20 (after fixation of silicone tube with a first holder turn tube and fix it with a second holder).

5.6. Stick to the printer (MFU) body a straight holder, as it shown on the picture. (Pic. 21; 22). A straight holder is stop for scanner cap.

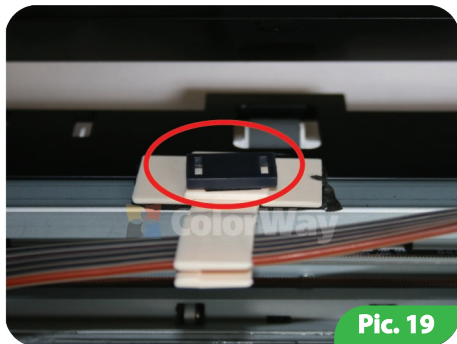
5.7. Fix indicator of cap closing with a piece of paper or foam rubber. (Pic. 23; 24).



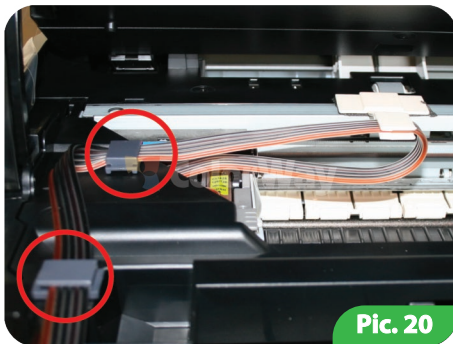
Pic. 17



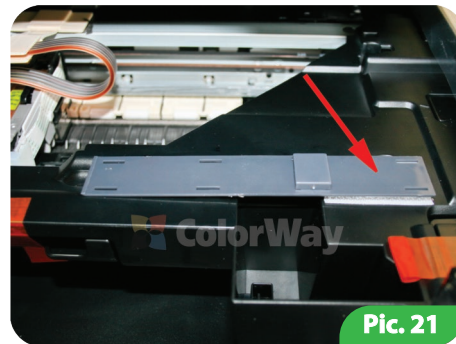
Pic. 18



Pic. 19



Pic. 20



Pic. 21



Pic. 22



Pic. 23



Pic. 24

A silicone tube fixation for Printers Canon.

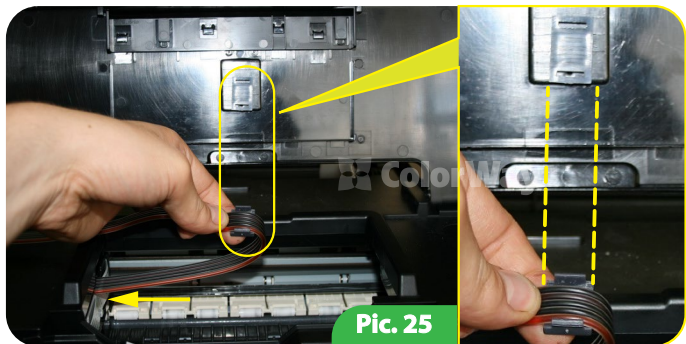
5.8. Get a carriage with cartridge in extreme left position.

For better fixation of 2 side scotch tape it is recommended to degrease the surface of taping with alcohol content liquid.

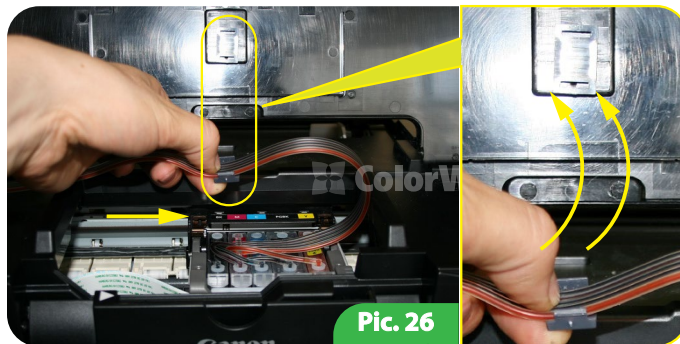
5.9. Stick the lower part U-shaped holder in the printer cap. Take top part of U-shaped holder and put it to the silicone tube. Fix silicone tube in the way the top part of holder is next to lower part. Fix with your hand top part of holder on the silicone tube (Pic. 25), in this way you measure the necessary length of silicone tube and place of its fixation.

5.10. Holding in the hand a holder please move a carriage to the middle (Pic. 26).

5.11. Close a silicone tube with a help of holder. (Pic. 27).



Pic. 25



Pic. 26

5.12. Get down a bit a cap of printer in a way so you can move a carriage a bit to the right, lay a silicone tube between a cap and body of the printer. (Pic. 28).

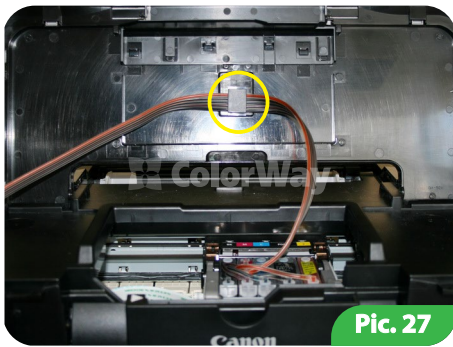
5.12. Fix a silicone tube on the printer body with a help of holder (Pic.29).

During the further use please do not open a cap in order to not to rip a silicone tube. If it is necessary to open a cap, open holder (Pic. 29), open a cap to 1-2 cm. Wait until the carriage get into position of replacement. Only after this you can open a cap. Two sided adhesive tape may lose the quality over some time so in this case please use additional glue.

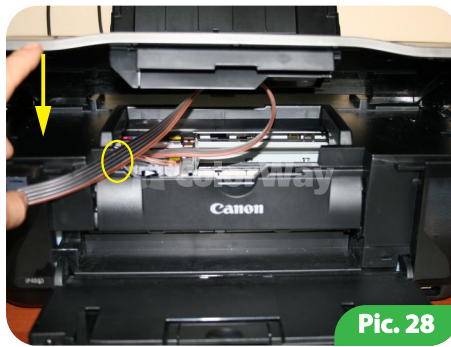
6. System start-up



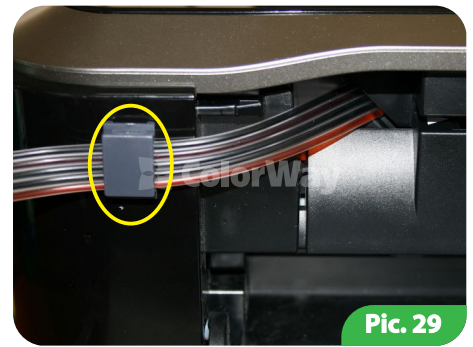
Before system start, please monitor whether you strictly followed to all instructions in section 2. Ink tank refilling. Make sure that ink tanks are on the same level with the printer; and air holes are open.



Pic. 27



Pic. 28



Pic. 29

- 6.1. Switch on printer (MFU). Wait until all operations are performed by printer, wait until printer is ready to be used.
- 6.3. With a help of printer (MFU) driver, please make 2-3 cleaning operations of nozzles and after print nozzle check in order to make sure that all nozzles work properly. If some nozzles do not print, leave the printer for few hours, over this time excessive air gets out from the printing head and system pressure gets stabilized. If it doesn't help please organize again pumping of cartridges and also see part 10 of this manual.
- 6.4. Ink is a cooler for printing head of printer. Lack of ink inside cartridges may damage the printer. If printer stands for a long time without work and in silicone tube is lots of air, it is necessary to pull out bloc of cartridges from the printer, to put on orange caps on the cartridges and to pump system again – Part 3 of this manual.
- 6.5. In case of unacceptable printing quality (after nozzles test and few cleaning procedures) remove rubber gasket from the cartridge that during printing gives the worst printing quality.



CISS comes with autochips, if MFU (printer) gives a message that ink is over. It is necessary to switch off and then switch on the printer. If it does not help press and hold the button Cancel on the front panel for 10 sec (red circle with triangle inside). With a help of this you switch off ink control, after this printer may give a message of low ink level or that it is impossible to identify ink level but printer continues to print. For each color it is necessary one time to switch off ink level control.

7. Ink tanks binding

- 7.1. CISS box includes clinchers for ink tanks and if it is necessary you may stick tanks to the printer. Please follow instructions on shown picture 30; 31; 32.



Pic. 30



Pic. 31



Pic. 32

8. Service regulations of CISS

- 8.1. External ink tanks should be filled correctly. A minimum level of inks should be in small ink tanks (p. 2 "Ink tanks refilling"). In case when in small tank too much of inks (Pic. 33), close all caps of tanks (Pic. 33). Tilt tanks on big caps and wait until inks will go from big tanks to small tanks (Pic. 34). Get tanks in standard position and open small caps (Pic. 35). Put in air filters.
- 8.2. Big holes in tanks should be closed and small holes open with air filters.
- 8.3. External ink tanks should be standing on the same level with printer, do not lift them higher than level of cartridges because it may cause leakage. If air filters do not work properly due to various reasons please remove them and use system without them.
- 8.4. A Silicone tube should be installed properly and do not obstruct a movement of printing head.
- 8.5. Print no less than 1 time a week to avoid printing head drying.
- 8.6. Use only high quality inks, do not mix inks of various brands and types. It may harm cartridges or printing head.
- 8.7. During printing do not get upside down ink tanks.
- 8.8. Use CISS in clean room at temperature of 15-35 C.
- 8.9. Do not get separate CISS parts. For getting the best printing quality please use inks and paper TM ColorWay.
- 8.10. Do not keep it under direct sun light.
- 8.11. Keep out of the reach of children, do not let inks to harm eyes.



Pic. 33



Pic. 34



Pic. 35

9. Transportation of CISS with printer.

- 9.1. Put out air filters and close with caps small halls in order to avoid leakage.
- 9.2. Bind with binder a silicone tube that comes from CISS to printer.
- 9.3. Transport a printer with CISS in horizontal position, do not get printer upside down. For more convenience you can stick air tanks to printer.

10. Questions and answers

Not printed well some places (pictures/text). In case when you have done a couple of times cleaning of printing heads and still printing head prints with white stripes.

Solution: cleaning of printing head several times, after each cleaning procedure make a test page. Between cleaning procedure make a pause for 5-10 min. If it does not help so please switch off printer and leave it for 12 hours in this condition. After this print a test page. If problem remains, please install original cartridges, if the same problem remains so problem with printer, please make a service for your printer.

Air bubbles in a silicone tube. In case if cleaning do not lead to positive result and problems remains. Solution is to do again p.3. System pumping, Probably in cartridges of CISS is not enough of inks.

A silicone tube is bended. In case when one or two colors do not work. Solution: please print a test page and check the whole length of silicone tube. After removing of bends please make cleaning of printing head.

Unnatural colors of printing. In case when all colors are unnatural. Solution: all cartridges should meet the respective color that is stated on a carriage of printing head. If colors mixed please wash system and refill it again in accordance with right order.

Poor printing quality. In case if a test page is printed well but printing quality is low. Solution: problem is printing settings, software installed incorrectly. Please change printer settings. Other reason might be not calibrated printing head. To fix it you need to calibrate (see instructions to the printer). During printing appears problems with colors or mix of color it might be the end of printing head life.

Printer does not recognize cartridges. In case: if indicator of ink replacement is on and after you properly clicked cartridges in carriage and performed p.6. and printer driver on computer says No cartridge or replace cartridge. Solution: cartridge is not properly installed in carriage or chip on cartridges are broken or dirty. In order to solve a problem you need to put out cartridges from carriage and fix, clean or replace. And after to install cartridges until click.

Problem with CISS installation. In case: when printer says General Error or your printer needs service

Solution: during the printing a carriage cannot move. A silicone tube might be too short or long, please adjust a necessary length of silicone tube. If an external part gets in a printer, please check printer body on any external parts.