

Inks optionally: IP7250RC-0.0 - (without inks), IP7250RC-5.5(P) - (5 bottles of inks and each 50 ml(P-with one pigment ink)), IP7250RC-5.1(P) - (5 bottles of inks and each 100 ml(P-with one pigment ink)).

Recommended ink:

Black ink on choices: CW-CP510BK - pigmented inks (not be mixed with CW-CW520BK); CW-CW520BK - dye ink (not be mixed with CW-CP510BK). Coloured - CW-CW521C; CW-CW521M; CW-CW521Y.

Box Content

1. Refill cartridges with auto chips 5 pcs – 1 set.
2. Syringe without needle - 5 pcs.
3. Needle for refilling 5 - pcs.
4. Manual 1 pc.

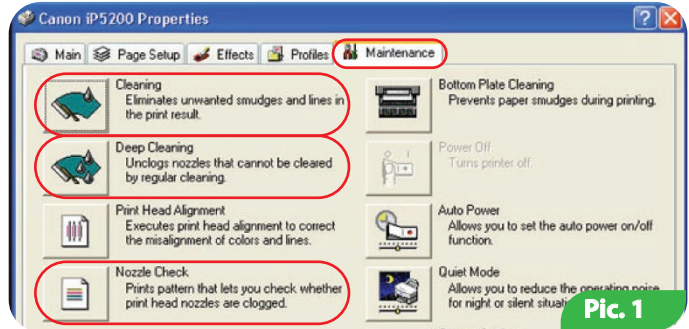
The exterior product view and bundling may vary. Drawings and photos are presented in the manual to understand the general installation and operation process of Refill cartridges. The manufacturer reserves the right to change product specification, designs and bundling without prior notice.

1. Preparation for installation

Before installation please check the whole system and box content.

During the period of Refill cartridges usage please do not touch chips, do not let dust and liquids to make them broken.

Reminder! The fact that in a printer is used non original consumables can be used as a reason of warranty cancellation.
 Make sure that your printer is compatible with this system (list of compatible printer models is on a side label of box).



Pic. 1

1.1. Before Refill cartridges installation please check the printer working condition: check that your printer work properly with original cartridges and everything is fine with paper supply mechanism and other printer mechanisms.

1.2. Please print test page to evaluate printer ability to work (Pic. 1). Start/Control panel/ Printers and Fax/Choose printer/Printer adjustment/Maintenance/Nozzle Chek. If the test is positive please start Refill cartridges installation, If the result is negative please follow the recommendations of cleaning the printing head with the help of printer software (Pic. 1). Maintenance/Cleaning (Deep Cleaning), if this does not give a positive result please service your printer in service center to repair your printer and cleaning of printing head.

1.3. All procedures are recommended to be organized in a way to avoid getting inks on furniture, clothes and other surfaces.

Attention! If previously you have been using low quality inks or you change now pigment inks into dye inks or dye inks into pigment inks, before Refill cartridges installation we recommend to clean a printing head of printer. For this you need to fill Refill cartridges with liquid for cleaning a printing head of printer and after make 2-3 cleaning of printing head with a help of printer software, cleaning liquid presses out old inks from printing head and you can use a new inks. After this procedure please remove cleaning liquid from the cartridges and fill them with inks as described below. If you have been using original consumables or consumables of TM ColorWay then no need in cleaning, our inks is completely compatible with original inks and that is why during installation no need to clean printing head.

1.4. Switch on a printer. Put a scanner cap that closes cartridges MFU. Wait until the carriage moves out from the position Parking (extreme right position) and stops in the middle in position Cartridge replacement.

1.5. Remove the cartridges from the printer.

2. Cartridge filling

Each cartridge has two holes. (Pic. 2). The hole N1 is for filling. Through this hole is organized ink filling. Filling hole should be **closed during printing**. The hole N2 is air hole. Through this hole during filling and printing the air comes in and out. After filling, **during printing it should be opened**.

Put on orange protective plugs on cartridges.

Notice: For refilling a large black cartridges it is necessary to use pigment ink, for refilling of small black cartridges it is necessary to use dye ink. Please do not mix pigment and dye inks.

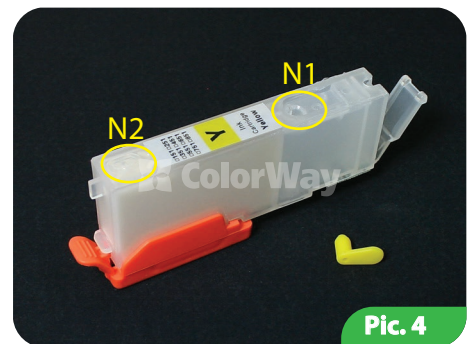
- 2.1. Remove protective yellow tape from Refillable cartridges set, label with inscription should be left on cartridges. (Pic 3). Open N1 hole on the top part of cartridge.
- 2.2. Get ink in syringe with necessary color and put a needle on a syringe. If Refill cartridges set contains 50 ml inks with special nozzle you can use them without syringe and needle.
- 2.3. Put a needle (or special nozzle) in filling hole (Pic. 5).
- 2.4. Through the refilling hole slowly fill cartridge in a way foam rubber absorbs ink properly (section N1) (Pic. 6) until section N2 is filled. In section N2 should be left 3-4 mm of air.
- 2.5. Tightly close filling hole with a cap. (Pic. 7).
- 2.6. In the same way fill other cartridges, using for each color separate syringe.
- 2.7. Before installation of cartridges in printer remove orange protective plugs from cartridge (Pic. 8-9). Do not press cartridges with your hands. After removing the plugs on the cartridge nozzle might be excess of ink please remove them with wipe.



Pic. 2



Pic. 3



Pic. 4



Pic. 5



Pic. 6



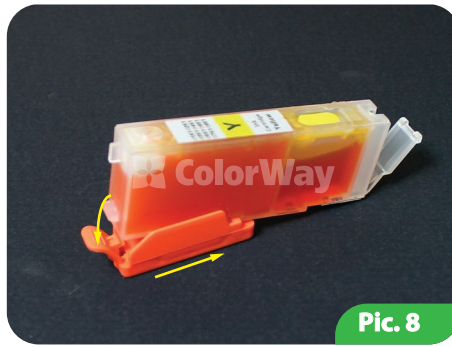
Pic. 7

Notice: Do not throw orange plugs, they are used for cartridge refilling.

2.8. Put set of Refill cartridges in a printer.

2.9. Wait until all operations are done by printer and MFU and please wait until it is ready to work. If printer (MFU) does not recognize all cartridges please follow to recommendations described in part 4. Cartridge reset.

2.10. With a help of printer (MFU) software plz make 2-3 cleaning procedures and after print out nozzle test to make sure all nozzles print well (p.1.2. of manual). If some nozzles do not print well please leave printer for 5-10 hours during this time excessive air gets out and the pressure inside cartridge is stabilized.



Pic. 8



Pic. 9

3. Cartridge refilling

Cartridge refilling is organized in accordance with start filling.

3.1. Pull out the cartridge that you need to fill from the printer.

Refilling of cartridges without pulling them out from the carriage is not allowed since during refilling you may create excessive pressure and excess of ink may get in a printer and the most important in order to reset cartridge chip you need to pull them out from the carriage.

3.2. Repeat part 2. Cartridge filling, of this instruction.

3.4. With a poor quality of printing please make 1-2 nozzles cleaning procedures of inkjet printer and then print out nozzles test. (p.2.10.).

4. Cartridge reset

Autochips only regulates virtual level of ink in Refill cartridges.

Virtual (electronic) level of ink is recognized by Epson printer, this is the level that is identified by auto chip and you can see on display of printer software. It equals approx. to the volume of original cartridge. When appears the message of empty cartridge so it means this is virtual ink level but not a real level.

Real (Actual) level of inks can be recognized by you, that is ink level that actually is presented in cartridge.

You need to understand that after first refilling of cartridge, Virtual and Real levels can be approx. the same in new one time use cartridges.

4.1. If printer (MFU) says that one of cartridges is empty or can't recognize it, so in this case it is necessary to make reset of ink level. When carriage with cartridges in position of Replacement, please pull out the cartridge. If it is necessary please refill it (part 3. Cartridge refilling).

4.2. **Auto chips have automatic reset when you pull them out from the printer more than 30 seconds** and under condition that printer software says it is time for cartridge replacement.

4.3. If there is a problem with cartridges reset, switch off and then in few minutes switch on printer. Pull out all cartridges for 2-3 sec from the carriage when the carriage in replacement position and then install them back, please make sure you install cartridges properly until click.

4.5. Printer (MFU) shows a message of empty cartridge when it consumed the ink volume that equals to the ink level of original cartridges.



If automatic reset does not work - press and hold the button Cancel on the front panel for 10 sec (red circle with triangle inside). With a help of this you switch off ink control, after this printer may give a message of low ink level or that it is impossible to identify ink level but printer continues to print. For each color it is necessary one time to switch off ink level control.

5. Questions and answers.

5.1. Printer does not recognize cartridges

-make sure that all chips are properly placed on their places on a cartridge and there is no ink and dirt on them. Do not touch chips with your hands.

-make sure the cartridges are installed properly until click.

-install all set of refill cartridges;

-in position Cartridge replacement, pull out the cartridges from the printing head for 30 sec and put them in back.

-Install cartridges one by one and controlling on display what cartridge does not work.

All procedures should be organized when the carriage of printer is in position of Cartridge replacement

5.2. Ink does not come to printing head:

-make sure that cartridges are filled properly and air holes are open

5.3. Cartridge can't reset

-cartridge reset can be organized when printer driver says that cartridge is empty otherwise on a new printers no reset can be done.

-for reset you need to pull out empty cartridge (in some cases all cartridges) from the carriage for a 30 sec, when a carriage is in Replacement position and then put them in back, please continue to print.



Print not less than 1 time a week, do not keep Refill cartridges under direct sun light.

Use Refill cartridge of TM ColorWay in clean place with air temperature 15-35 C.

Use ink that you used initially. Do not mix inks of different brands and types.

In some exceptional cases from the printer may come out used inks, in order to avoid this situation we advise to set Ink output, for more detailed information you can contact TM ColorWay.

During transportation or long-term storage, close air holes in Refill cartridges, do not get upside down printer with Refill cartridges. Do not get separated cartridges parts. In order to get the best quality use photo paper of TM ColorWay.

Important: keep inks out of reach of children; do not drink ink; keep ink away from your eyes.