

Box content:

1. Ink tanks with stoppers (2 colors) - 1pc.
2. Silicone tube (2 channel) - 1pc.
3. Tube holder "clip" - 2 pcs.
4. Tube holder "L - shaped" - 1pc.
5. Tube holder "T-shaped" - 1pc.
6. Block of cartridges (2pc) with Combo Chip - 1 pc.
7. battery
8. Syringe without a needle - 2 pcs.
9. Installation Instructions - 1 pc.
10. Warranty - 1 pc.

The exterior product view and box content may differ. Drawings and photos are presented in the manual to understanding the general installation and operation process of the CISS. The manufacturer reserves the right to change product specifications, design and box content without prior notice.

Inks optionally: code-0.0 - (without inks), code-4.5 - (4 bottles of inks and each 50 ml), code-4.1 - (4 bottles of inks and each 100 ml)


Recommended ink:

Black:

CW-EW400BK - water-based ink (not be mixed with CW-EP460BK)

CW-EP460BK - pigmented inks (not be mixed with CW-EW400BK)

1. Installation preparation

Installation of CISS requires technical information how to install it so we advise you to read instruction before installation.

Before installation please check the whole system and box content.

During the period of CISS usage please do not touch chips, do not let dust and liquids to make them broken.

1.1. Before installations of CISS please make sure the printer is in working condition: make sure the printer works well with original cartridges and paper supply mechanism is fine. If the printer is new and it is been never used before so please go to p.1.3.

1.2. Please print test page to evaluate printer ability to work (Pic. 1).

Reminder! The fact that in a printer is used non original consumables can be used as a reason of warranty cancellation.
Make sure that your printer is compatible with this system (list of compatible printer models is on a side label of box).

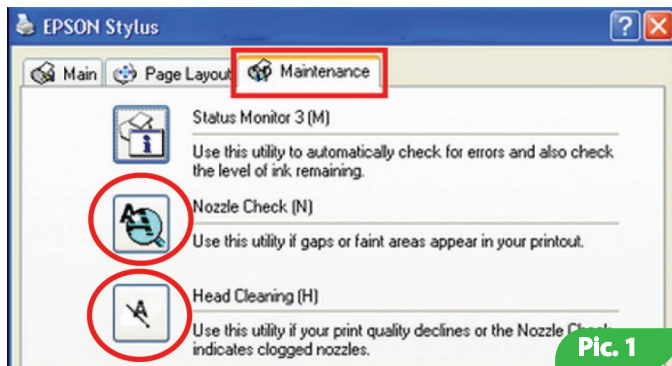
Start/Control panel/ Printers and Fax/Choose printer/Printer adjustment/Maintenance/Nozzle Check

If test is positive so please start to CISS installation. If result is negative so please follow the recommendations on cleaning printing head via software of printer. Maintenance, Head Cleaning, if this does not bring positive effect so please service your printer in specialized center.

1.3. Please check compatibility of your printer with CISS (sticker on a box). Please check compatibility which tank belongs to which cartridge and match of cartridge colors sequence in printer and CISS. If it is necessary replace labels on ink tanks and rubber caps of ink tanks in a correct sequence for your printer

1.4. Get straight a silicone tube, it should be in fine working condition. Let CISS to lie for a while for getting room temperature.

1.5. All procedures are recommended to be organized in a way to avoid getting inks on furniture, floor and clothes.



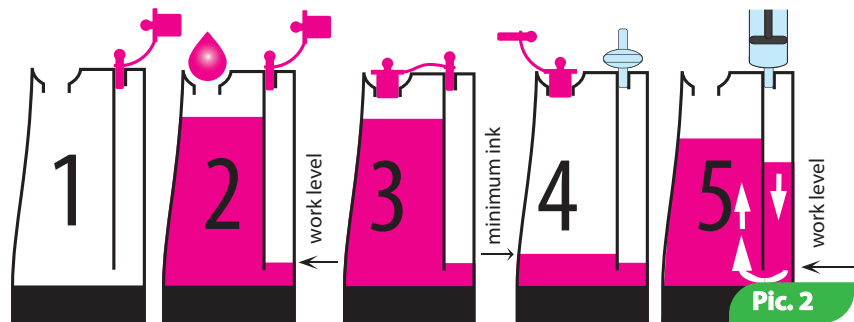
Pic. 1

Attention! If previously you have been using low quality inks or you change now pigment inks into dye inks or dye inks into pigment inks. In this case please clean a printing head before printing with a special cleaning liquid. If you have been using original inks or inks of TM ColorWay in this case no need to clean printing head. TM ColorWay inks is completely compatible with original inks and during installation of TM ColorWay CISS no need to clean printing head.

2. Ink tank refilling

PLEASE NOTE: INK VERY BADLY WASHED OFF, PLEASE ORGANIZE ALL THE PROCEDURES VERY CAREFULLY!

INK CAN RUIN YOUR FURNITURE AND CLOTHES; MAKE SURE THAT YOUR WORKING SPACE AND CLOTH ARE NOT CHERISHED.



Pic. 2

Fill in the ink tanks as it shown on Pic. 2:

- 2.1. Plug small aperture with the rubber;
- 2.2. Inject ink through the big aperture;
- 2.3. Plug the big aperture;
- 2.4. Unplug the small aperture, insert the air filter;
- 2.5. In case big apertures weren't plugged, ink level in both chambers will become equal. In this case you have to unplug both chambers, insert the syringe with pulled back plunger into the small aperture. Carefully push the syringe plunger down, injecting the air into the small chamber and transferring ink into the big chamber. Then plug the big aperture (Pic. 2 - images 5).

In-service ink tanks should be correctly filled-in: please pay attention to operating level of ink in small chamber - it should be minimal.

Note: Do not place ink tanks higher than level of cartridges (printing head) it may cause leakage. Due to excess pressure ink flows into the printer and may spoil printing head and electronic contacts. Keep the ink tanks on the same level with the printer. The air filters (membrane) should be clean and dry. If the air filter is moisten with ink or any other liquid - it stops passing the air and CISS stops working properly (the missing colors are observed on printouts). In this case it'll be better to take filter away and use the CISS without it.

3. System Pumping

During first system installation, it is necessary to pump system it means to fill silicone tube and cartridges with inks.

3.1. For system pumping pull out in a cartridge a rubber cap on the top of cartridge, you can use for this a pen.

3.2. Put a syringe in hole and slowly pull a plunger of syringe and you see how inks filling cartridge (Pic. 3), please proceed with this operation until inks come into a syringe.

3.3. Remove a syringe from cartridge and close a hole with rubber cap.

3.4. Take a clean syringe and pump other colors.

If during a pulling of syringe plunger it is hard to pull or plunger comes back so in this case check a silicone tube for any kinks or bends.

4. CISS installation

4.1. Turn on the printer (MFPs), once the print head will move from the "parking" place (far right position) unplug the power cord of the printer (MFPs). In this way, you will free the print head mechanism from "parking" place and you can move it freely by hand.

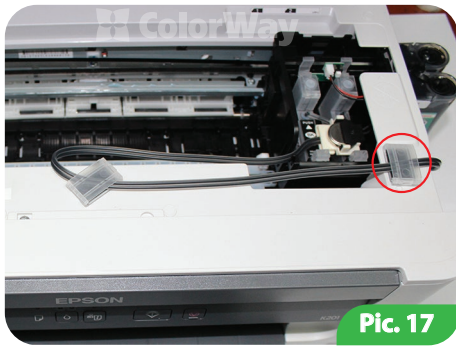
4.2. Move the carriage by hand to "replace cartridge" position (Pic. 4), if necessary, remove the cartridges. Do not discard the original cartridges, they can come in handy when you need to remove the CISS or printer operation check.

4.3. Using the screwdriver, remove the top cover of the carriage. To do this, insert a screwdriver between the cover and the carriage body on right side, and creating a force-type "lever", carefully remove the cover. Do not drop superfluous subjects inside the printer. (Pic. 4, 5, 6)

4.4. Install the CISS cartridges in to the printer carriage (Pic. 7). Please note that it requires more effort than when you install the original cartridges.



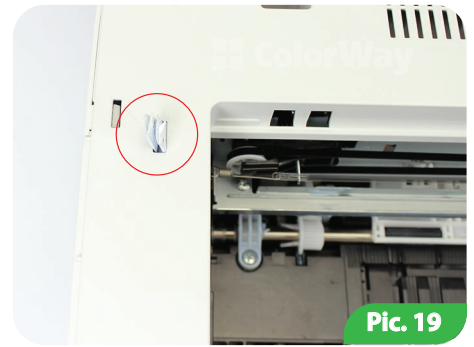
Pic.3



Pic. 17



Pic. 18



Pic. 19



6. Cartridges reset

During the first use or after cartridges reset, the printer driver (MFU) gives a message that not original cartridges in use. To continue printing you need to press in the window of the printer driver the button "Continue printing".

6.1. If printer says that one of cartridges is empty or it is impossible to recognize it, so it is necessary to make reset of ink level. For this on the printer press a button Cartridge replacement (blob), a cartridge carriage moves and stops in replacement position for cartridge that must be replaced and then press one more time button Cartridge replacement and after this carriage moves to the position of cartridges replacement. In MFU and display printer carriage moves to the cartridges replacement after first click on button. This operation can be done with a help of printer manual.

6.2. When carriage with cartridges is in position of Cartridge replacement, please press chips button and hold it pressed for 5 sec (Pic. 20). Please do it gently in order not to harm a button. This procedure imitates a natural replacement procedure. Position of button may vary on chips models but it always on top of cartridges.

6.3. Press one more time button Cartridge replacement (blob), in MFU button OK, confirmation of cartridges replacement. Printer does pumping of printing head and reset empty cartridge.

6.4. If there is a problem with cartridge reset, switch off and after 2 minutes switch on printer. Pull out all cartridges from carriage when it is in Change position for 2-3 sec and put them back in, make sure all cartridges clicked.

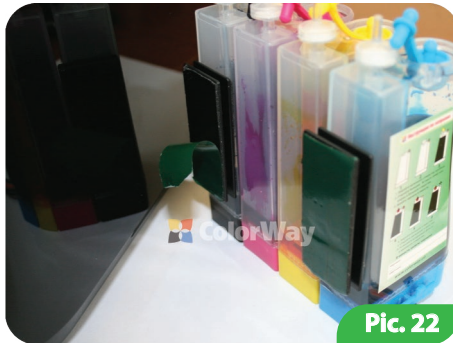
6.5. A printer or MFU say of empty cartridges when it is consumed of inks equal to original cartridge volume.

7. Ink tanks binding

7.1. CISS box includes clinchers for ink tanks and if it is necessary you may stick tanks to the printer. Please follow instructions on shown picture 21; 22; 23.



Pic. 21



Pic. 22



Pic. 23

8. Service regulations of CISS

8.1. External ink tanks should be filled correctly. A minimum level of inks should be in small ink tanks (p. 2 "Refilling of ink tanks"). In case when in small tank too much of inks (Pic. 13), close all caps of tanks (Pic. 24). Tilt tanks on big caps and wait until inks will go from big tanks to small tanks (Pic. 25). Get tanks in standard position and open small caps (Pic. 26). Put in air filters.

8.2. Big holes in tanks should be closed and small holes open with air filters.

8.3. External ink tanks should be standing on the same level with printer, do not lift them higher than level of cartridges because it may cause leakage. If air filters do not work properly due to various reasons please remove them and use system without them.

8.4. A Silicone tube should be installed properly and do not obstruct a movement of printing head.



Pic. 24



Pic. 25



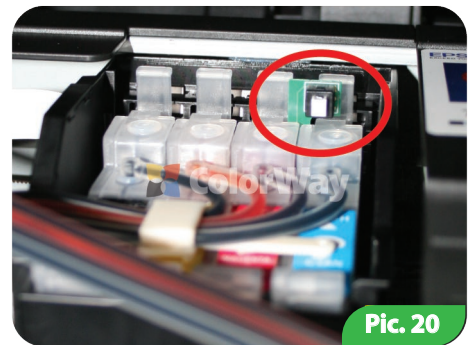
Pic. 26

5. System start-up

! Before system start, please monitor whether you strictly followed to all instructions in section 2. Ink tank refilling. Make sure that ink tanks are on the same level with the printer; and air holes are open.

5.1. Switch on printer (MFU). Wait until printer is ready. If printer does not recognize all cartridges, please do section 6. Cartridges reset.

5.2. With a help of printer driver do 2-3 cleaning procedures and after this print out a test page and then make sure all nozzles print properly. (p.1.2.). If some nozzles do not print, please leave printer for 5-10 hours, over this time an air that could get in printing head during installation can go out and also a system pressure stabilizes.



Pic. 20

The main effort to install need to exert in the area of pumping holes on the CISS cartridges. Cartridges should be inserted until it clicks, each cartridge latch should be latched (Pic. 8, 9), otherwise the chip on the cartridges will not get a contact group of the carriage and the printer does not recognize cartridges. Concern to this procedure very carefully and attentively.

Before you begin the process of securing the tube - you should clearly understand the principle of tube motion while the printer in work, as well as to understand the basic principles of tube securing :

Rule 1: The lengths of the tube should be enough for the free movement of the print head from the far right - to the far left position;

Rule 2: The tube can be bent and touch the body of the printer when moving the print head, but the tube should not stuck between moving and stationary parts of the printer!



Pic. 4



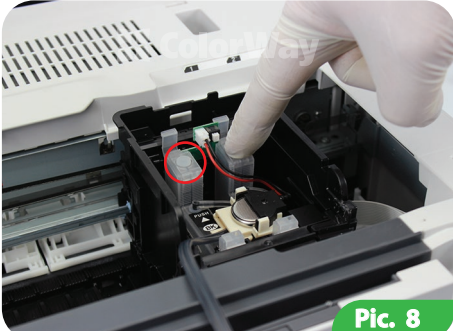
Pic. 5



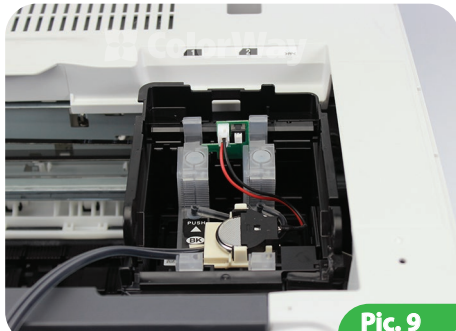
Pic. 6



Pic. 7



Pic. 8



Pic. 9

For K101 Printer

4.5. Before using double-sided tape, degrease connection points using alcohol liquid. Over time, the double-sided tape fasteners may lose their properties and keep the bad fasteners, then use glue to secure the holder.

Secure the T-shaped tube holder on the printer as shown in the figure (Pic. 10) (you should do this procedure responsibly, the holder must hold strongly).

4.6. Secure the tube in the holder (Pic. 11).

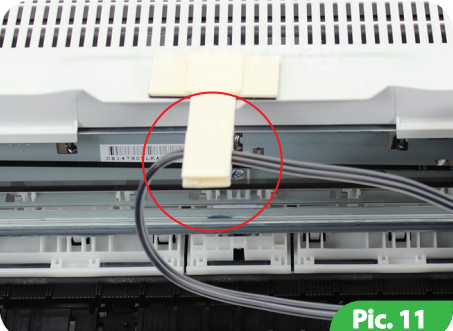
4.7. Carefully move the carriage from the far right to the far left position by hand (Pic 12), the tube should not be twisted and jammed the carriage, tighten if necessary (loosen) excess (not needed) tube.

Further operation of the printer with CISS depends on correctness of the tube securing and following all regulations.

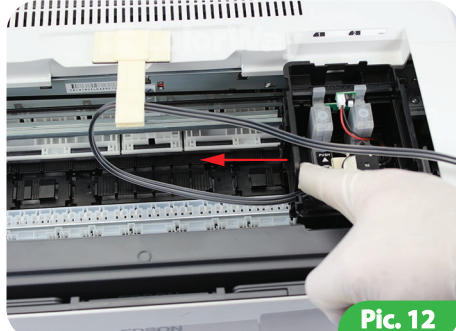
4.8. Using the "U-shaped" holder secure the tube on the printer body. (Pic. 13).



Pic. 10



Pic. 11



Pic. 12

For MFPs K201/K301

4.9. Secure the tube holder "clip" on the printer body as shown in the pictures (Pic. 14) should be 12 cm from the left edge of the carriage to the right side of the holder (you should do this procedure responsibly, the holder must hold strongly).

4.10. Move the carriage to the far left position by hand (Pic. 15), make a small loop and secure the tube in the holder (Pic. 16).

4.11. Carefully move the carriage from the far right to the far left position by hand, the tube should not be twisted and jammed the carriage, tighten if necessary (loosen) excess (not needed) tube.

Further operation of the printer with CISS depends on correctness of the tube securing and following all regulations.

4.12. Using the "U-shaped" holder secure the tube on the printer body. (Pic. 17).

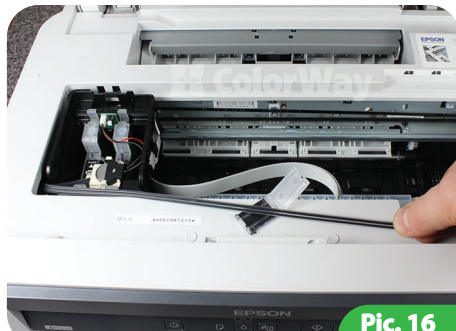
Before starting the system, you need to fix the scanner cover open sensor means at hand (the location of the sensor depends on the model), such as tape or foam rubber. (Pic. 18, 19).



Pic. 14



Pic. 15



Pic. 16

- 8.5. Print no less than 1 time a week to avoid printing head drying.
- 8.6. Use only high quality inks, do not mix inks of various brands and types. It may harm cartridges or printing head.
- 8.7. During printing do not get upside down ink tanks.
- 8.8. Use CISS in clean room at temperature of 15-35 C.
- 8.9. Do not get separate CISS parts. For getting the best printing quality please use inks and paper TM ColorWay.
- 8.10. Do not keep it under direct sun light.
- 8.11. Keep out of the reach of children, do not let inks to harm eyes.

9. Transportation of CISS with printer.

- 9.1. Put out air filters and close with caps small holes in order to avoid leakage.
- 9.2. Bind with binder a silicone tube that comes from CISS to printer.
- 9.3. Transport a printer with CISS in horizontal position, do not get printer upside down. For more convenience you can stick air tanks to printer.

10. Questions and answers

Not printed well some places (pictures/text).

In case when you have done a couple of times cleaning of printing heads and still printing head prints with white stripes.

Solution: cleaning of printing head several times, after each cleaning procedure make a test page. Between cleaning procedure make a pause for 5-10 min. If it does not help so please switch off printer and leave it for 12 hours in this condition. After this print a test page. If problem remains, please install original cartridges, if the same problem remains so problem with printer, please make a service for your printer.

Air bubbles in a silicone tube.

In case if cleaning do not lead to positive result and problems remains. Solution is to do again p.3. System pumping, Probably in cartridges of CISS is not enough of inks.

A silicone tube is bended.

In case when one or two colors do not work. Solution: please print a test page and check the whole length of silicone tube. After removing of bends please make cleaning of printing head.

Unnatural colors of printing.

In case when all colors are unnatural. Solution: all cartridges should meet the respective color that is stated on a carriage of printing head. If colors mixed please wash system and refill it again in accordance with right order.

Poor printing quality.

In case if a test page is printed well but printing quality is low. Solution: problem is printing settings, software installed incorrectly. Please change printer settings. Other reason might be not calibrated printing head. To fix it you need to calibrate (see instructions to the printer). During printing appears problems with colors or mix of color it might be the end of printing head life.

Printer does not recognize cartridges.

In case: if indicator of ink replacement is on and after you properly clicked cartridges in carriage and performed p.6. and printer driver on computer says No cartridge or replace cartridge.

Solution: cartridge is not properly installed in carriage or chip on cartridges are broken or dirty. In order to solve a problem you need to put out cartridges from carriage and fix, clean or replace. And after to install cartridges until click.

Problem with CISS installation.

In case: when printer says General Error or your printer needs service

Solution: during the printing a carriage cannot move. A silicone tube might be too short of long, please adjust a necessary length of silicone tube. If an external part gets in a printer, please check printer body on any external parts.