

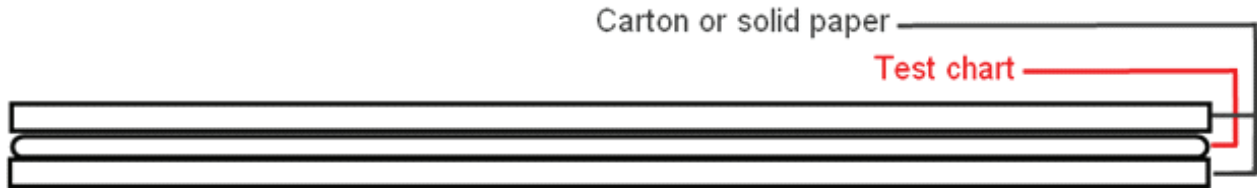
Printing of the test charts.

We are creating the ICC profiles on request to your printer for using ink and paper Colorway™. To order ICC profile, you should:

- Fill in the table on the model:

Last name, First name	Phone	E-Mail	Printer model	Photo Paper	inks	notes
Robins Adam	+38(050)5555555	@gmail.com	Epson P50	PG-180	CW-EW-650	

- Print test chart (see how to do this later in the manual);
- Allow to dry for at least one day image for Glossy and Art paper, at least 12 hours for Matte paper;
- Put test chart between carton or solid paper and then into an envelope, to avoid scratching or distortion (deterioration) of the image.



- Put filled table into an envelope along with test chart;
- Send by registered mail to the address: **21 Moskovsky Ave, office 402, Kiev, Ukraine, 04655** With mark "For ICC profile creation"

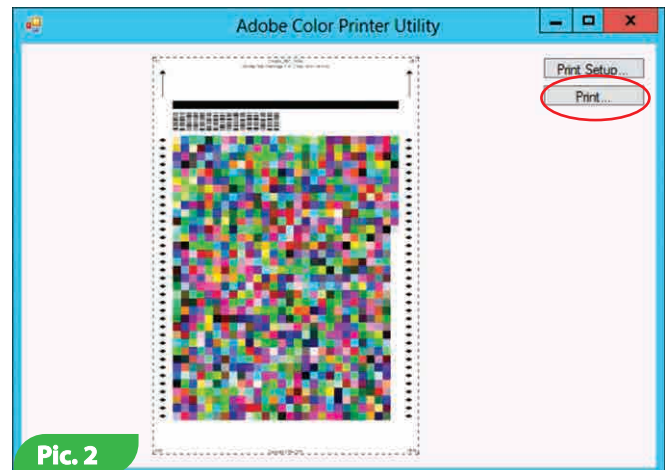
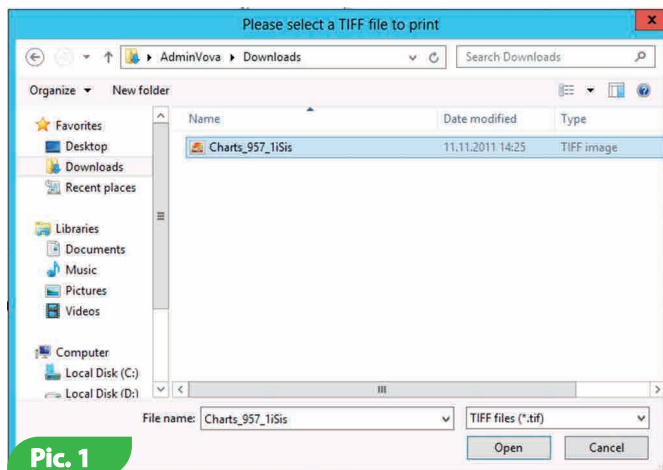


- After creating an ICC profile it will be sent to the e-mail what you write into a table; Notes. ICC profile creation occurs in a queue, without queue ICC profile creation possible only for photo paper and ink Colorway™ If you have any questions regarding the creation of profiles mail us **info@colorway.com**

Download archive for A4 format or archive for 10x15 format and unpack the archive to your computer
Open the program

! For format A4 need 1 sheet of photo paper, file for printing is located in the A4 archive.
For format 10x15 need 3 sheets of photo paper, files for printing is located in the 10x15 archive

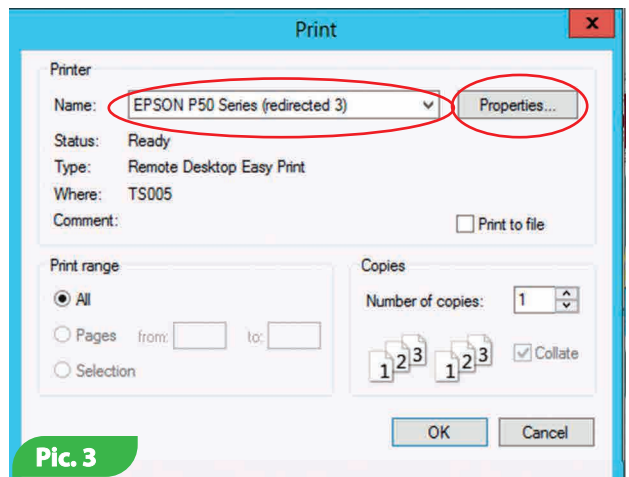
- 1) The program will ask to open the file with .tiff format (file located in the archive) (Pic.1)
- 2) Then click "Print ..." (Pic.2)



Pic. 1

Pic. 2

3) Select your printer from the list and click Properties. (Pic. 3)



Pic. 3

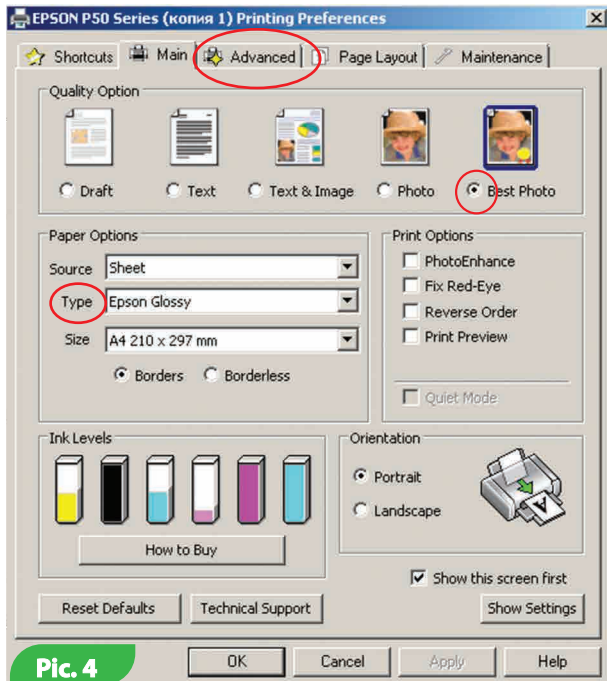
Important! Test chart shouldn't be scaled, the lateral width between the dotted lines may not exceed 198 mm, but not to be less than 190mm, for 10x15 format width shall not exceed 9.5 mm, otherwise the device can not scan the printed test chart.

Further settings may be differ, depending on the brand of a printer.

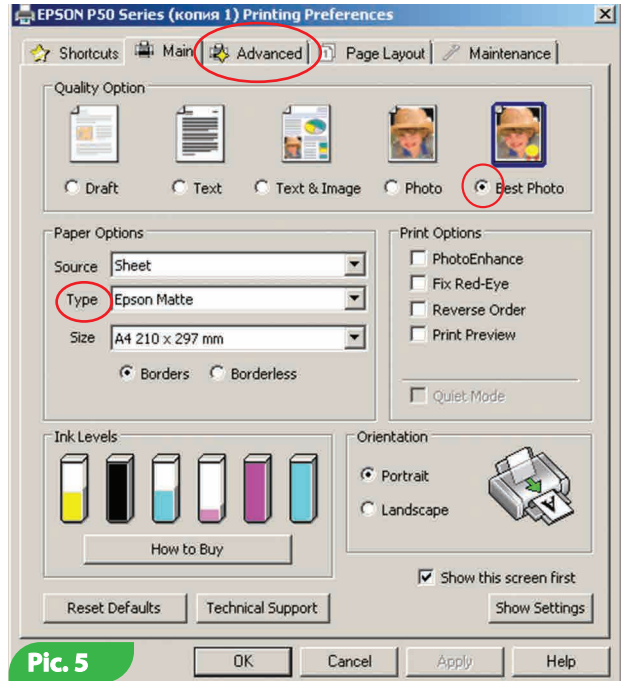
FOR printers and MFPs EPSON

For printing on High Glossy, Premium High Glossy, Silky Glossy, Semi-Glossy, Satin, Dual-Sided High Glossy, Textured Glossy photo paper (Pic. 4, 6)

For printing on Matte, Dual-Sided Matte and Textured Matte photo paper (Pic. 5, 7)



Pic. 4



Pic. 5

1) Go to the tab "Main"

2) In the "Media Type" select "Glossy Photo Paper" or "Matte Photo Paper", it's depends on your tupe of photo paper (Pic. 4, 5)

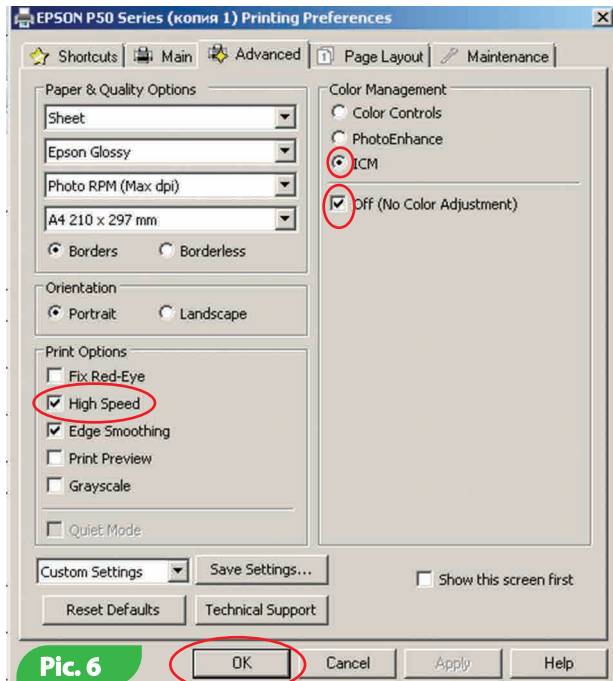
3) In the "Quality Options " select "Best Photo" (Pic. 4, 5)

4) Select the tab "Advanced".

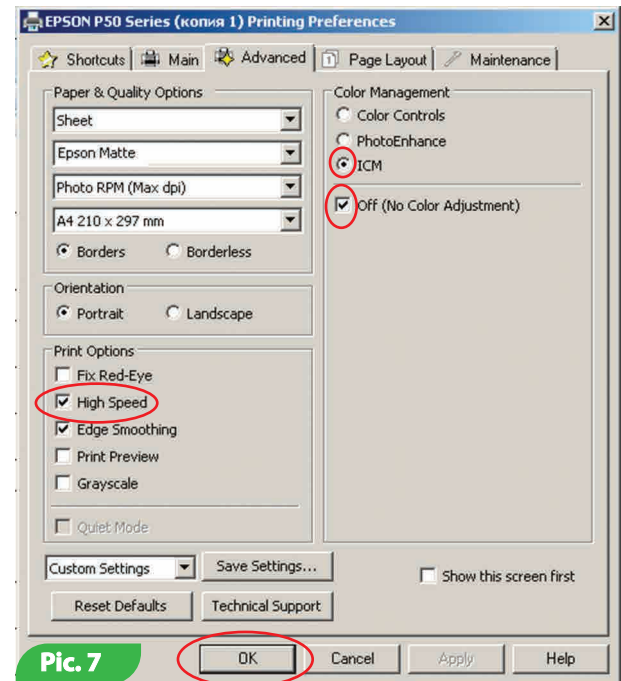
5) Under "Color Management" select "ICM" and be sure to put a checkmark in "Off. (No Color Adjustment) " (Pic. 6, 7)

6) In the "Print Options" put a checkmark in the "High Speed". (Pic. 6, 7)

7) Press button "OK" (Pic. 6, 7)



Pic. 6

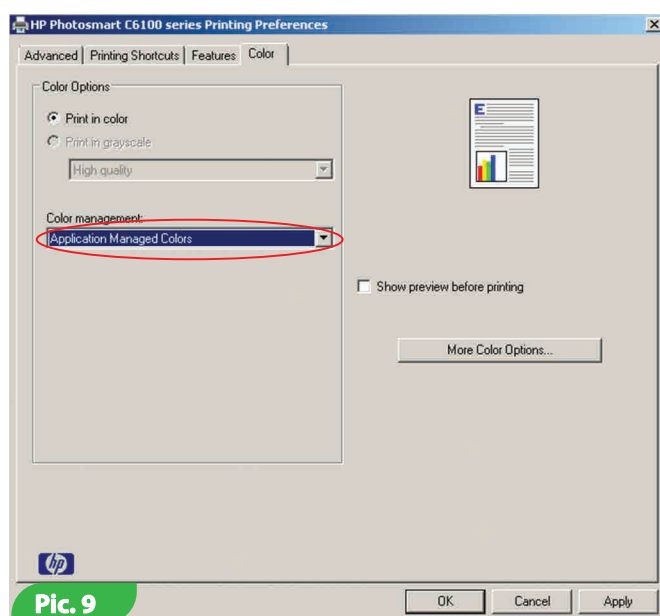
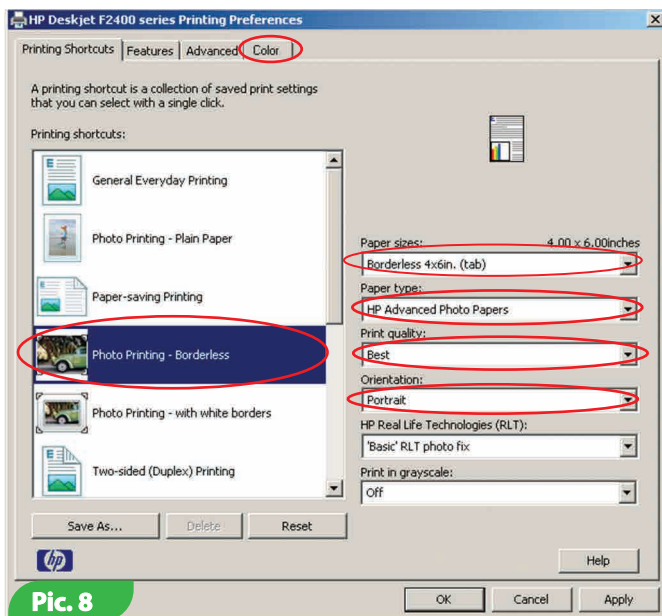


Pic. 7

FOR printers and MFPs HP

For printing on High Glossy, Premium High Glossy, Silky Glossy, Semi-Glossy, Satin, Dual-Sided High Glossy, Textured Glossy, Matte, Dual-Sided Matte and Textured Matte photo paper (Pic. 8)

- 1) Go to the tab "Printing Shortcuts"
- 2) Select the paper size according to the format of your paper
- 3) Click "Photo Printing - Borderless"
- 4) Paper Type, select "HP Advanced Photo Papers"
- 5) Print Quality select the "Best"
- 6) Orientation, select "Portrait"
- 7) Next, go to the tab "Color"
- 8) Paragraph Color Management, select "Application Managed Colors", as shown in Pic. 9



FOR printers and MFPs Canon

For printing on High Glossy, Premium High Glossy, Silky Glossy, Semi-Glossy, Satin, Dual-Sided High Glossy, Textured Glossy photo paper (Pic. 10)

For printing on Matte, Dual-Sided Matte and Textured Matte photo paper (Pic. 11)

- 1) Select the paper size according to the format of your photo paper
- 2) Go to the tab "Main"
- 3) In the "Media Type" select "Glossy Photo Paper" or "Matte Photo Paper", it's depends on your tupe of photo paper (Pic. 10,11)
- 4) In the "Print Quality" select "High" (Pic. 10, 11)
- 5) In the "Color/Intensity" select "Manual" and click "Set" (Pic. 10, 11)
- 6) Go to the tab "Matching" and in the "color correction" select "None", as shown in Pic. 12, 13
- 7) Press button "OK" (Pic. 13)

