

Universal basic instructions for printing photos using ICC profiles.

You spend the majority of your weekend tweaking a photo that you worked tirelessly to capture. You bought a fantastic camera and a great computer, and now you've shot a wonderful picture. All the fruits of your labor have come together to create this single image, and you can't wait to see the output from the printer.

Then you actually get the print—and you wonder why you bothered.

The problem isn't you, your printer, or your computer. The problem is that all these things came together without a key component—calibration.

Profiles are simply look-up tables that describe the properties of a color space. They define the most saturated colors available in a color space; i.e. the bluest blue or deepest black your printer can produce. If you don't have a profile, the trio of Red, Green, and Blue values (or CMYK) that make up a color have no particular meaning — you can say something is blue, but not exactly which shade of blue. Accurate profiles are the key to a color-managed workflow. With accurate monitor and printer profiles, your prints will closely match what you see on your monitor. Without profiles, you need to rely on trial and error combined with good old-fashioned guessing.

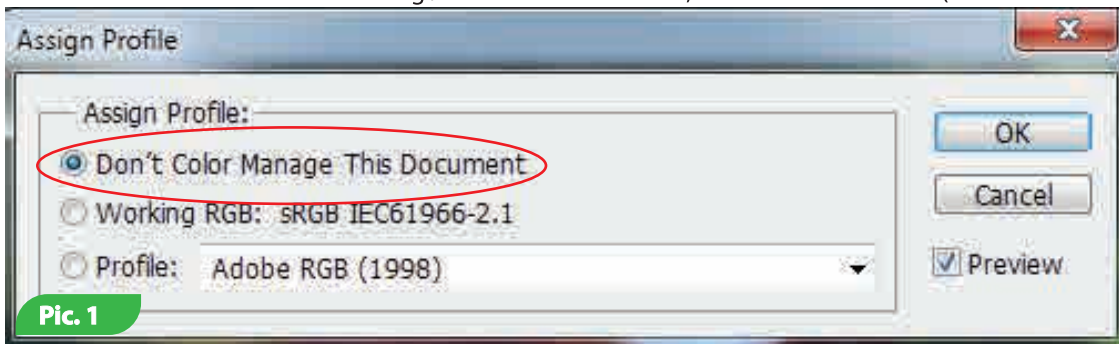
There are several ways for the print with an ICC profile. This instructions describe some of them.

Prepare for printing.

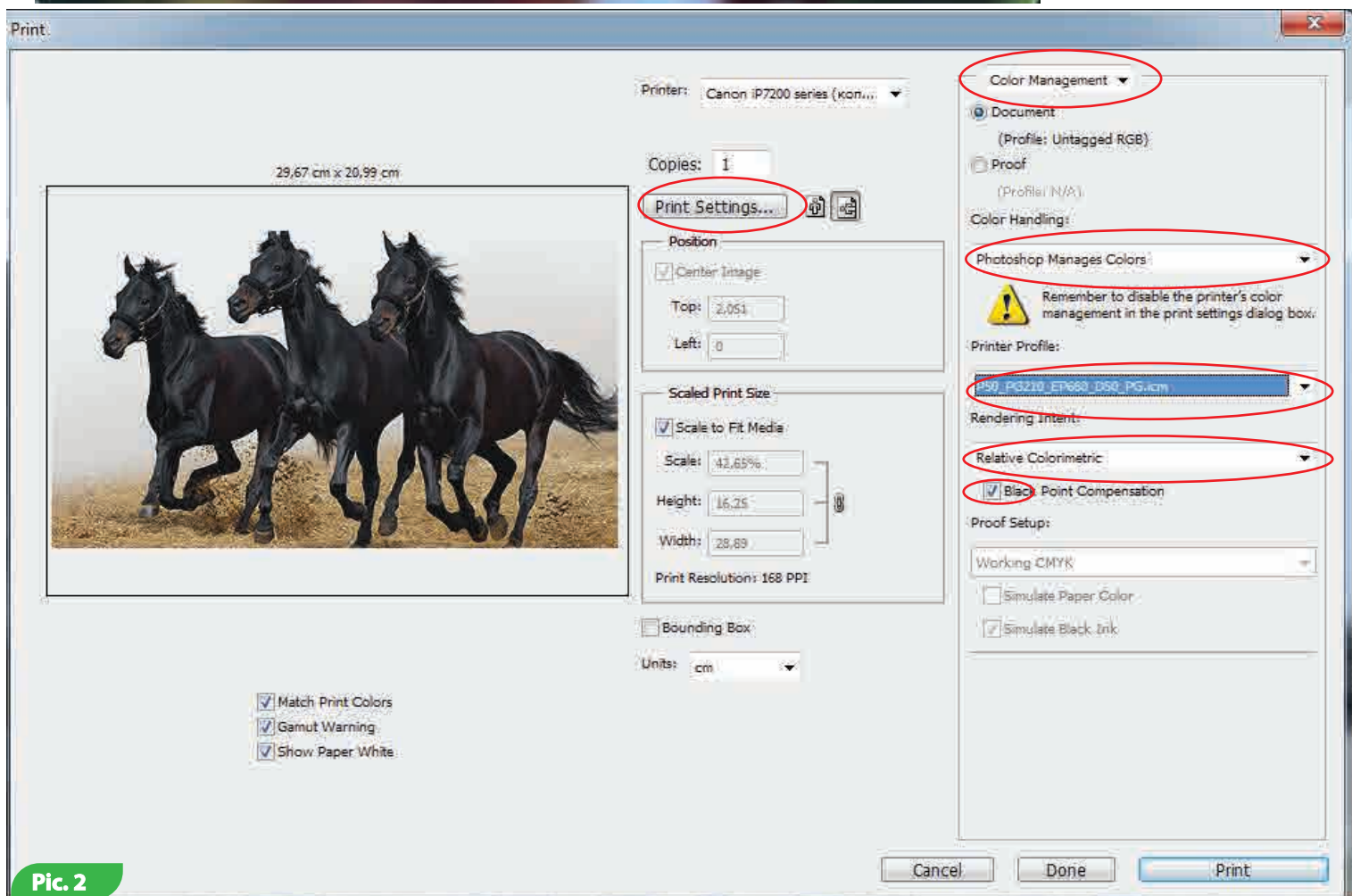
Color profile can be used only in programs with support of Color Management. It is programs such as Adobe Photoshop, Adobe Illustrator, ACDsee Pro, etc. Before printing, you should to download an ICC file from a site www.colorway.com (partition "Support", chapter "ICC profile"). Pay attention to the correct choice of the printer, inks and photo paper. Copy this file to a folder which usually located on the local disk C: Windows/System32/Spool/Drivers/Color or the same folder in another operating system on your computer.

Print photos with a color profile in Adobe Photoshop

1. Run Adobe Photoshop
2. Open the photo - the menu "File / Open" from the context menu, select that photo what you want to print.
3. If will show a window about missing / incorrect Color Profile, select the "Leave as is (don't color manage)" (Pic.1)



Pic. 1



Pic. 2

4. Open the Print Options window - menu "File / Print". Then select the print size, positioning on the page, page orientation. Then, in "Color Management" select "color controlled Photoshop". Next, select the ICC profile from the list for your type of printer and paper. Next in "Rendering Intent" select "Perceptual" and check the box for "black point compensation". (Pic. 2)

5. Press "Print setting".(Pic. 2)

Further settings may be differ, depending on the brand of a printer.

Print with an ICC profile using standard Windows OS software

Prepare for printing.

Before printing, you should to download an ICC file from a site www.colorway.com (partition "Support", chapter "ICC profile"). Pay attention to the correct choice of the printer, inks and photo paper. Copy this file to a folder which usually located on the local disk C: Windows/System32/Spool/Drivers/Color or the same folder in another operating system on your computer.

1. Choose your printer and press button "Options" (Pic. 3)

2. In opened window press "Color Management" (Pic. 4)

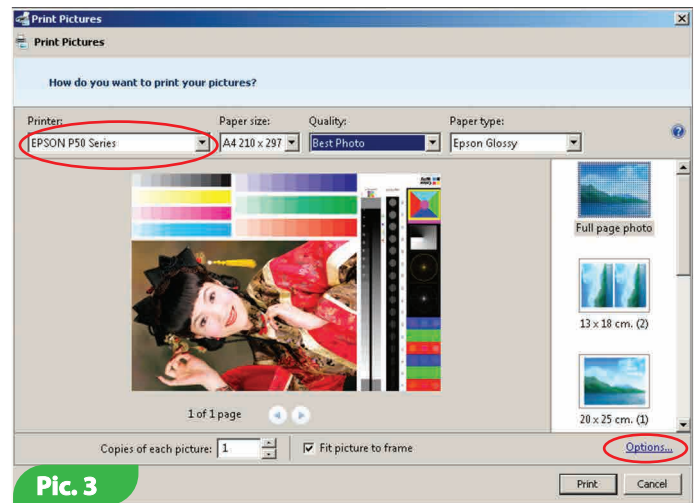
2. Mark a tick next to "Use my settings for this device"

3. In row "Profile selection" choose an item "Manual" and press button "Add" (Pic. 5)

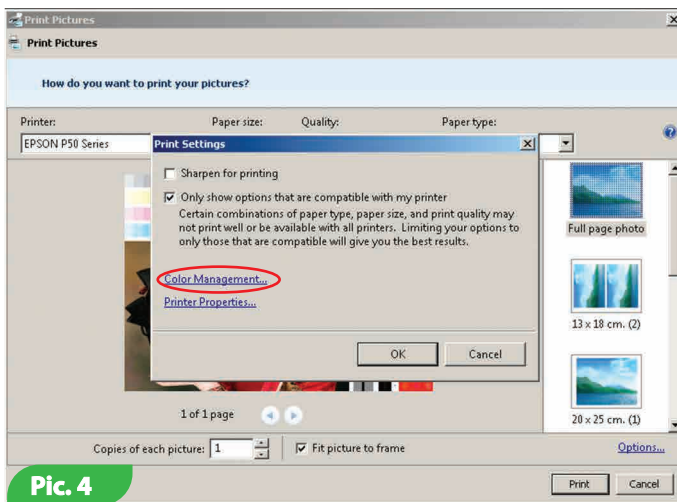
4. In opened list of ICC profiles you should find needed for you ICC profile and press button "OK" (Pic. 6)

4. Choose correct profile and click on the "Set as Default Profile" (Pic. 7)

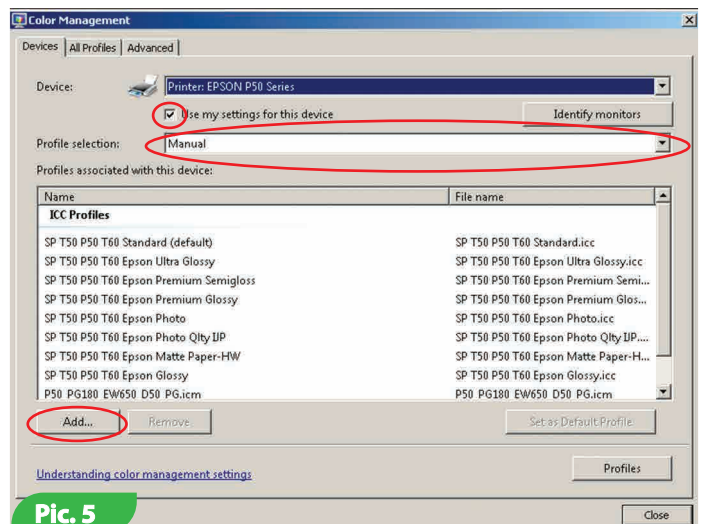
Further settings may be differ, depending on the brand of a printer.



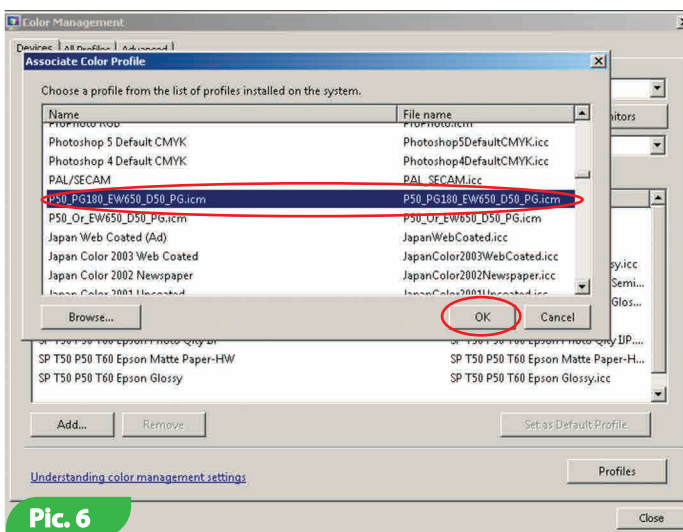
Pic. 3



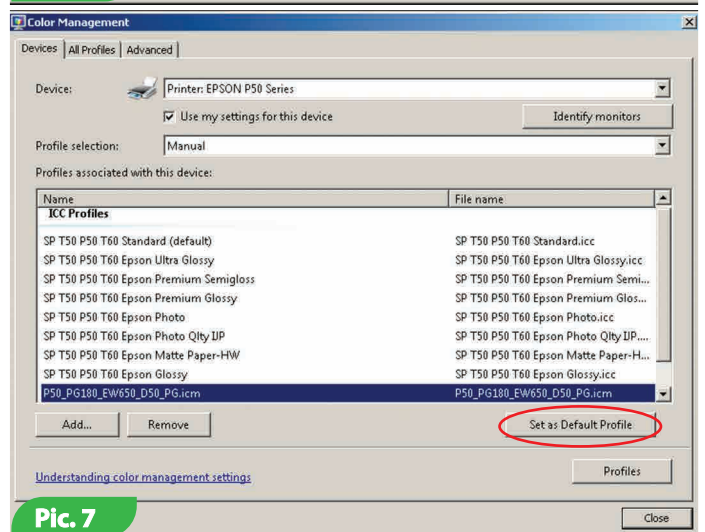
Pic. 4



Pic. 5



Pic. 6



Pic. 7

FOR printers and MFPs EPSON

For printing on High Glossy, Premium High Glossy, Silky Glossy, Semi-Glossy, Satin, Dual-Sided High Glossy, Textured Glossy photo paper (Pic. 8, 10)

For printing on Matte, Dual-Sided Matte and Textured Matte photo paper (Pic. 9, 11)

1) Go to the tab "Main"

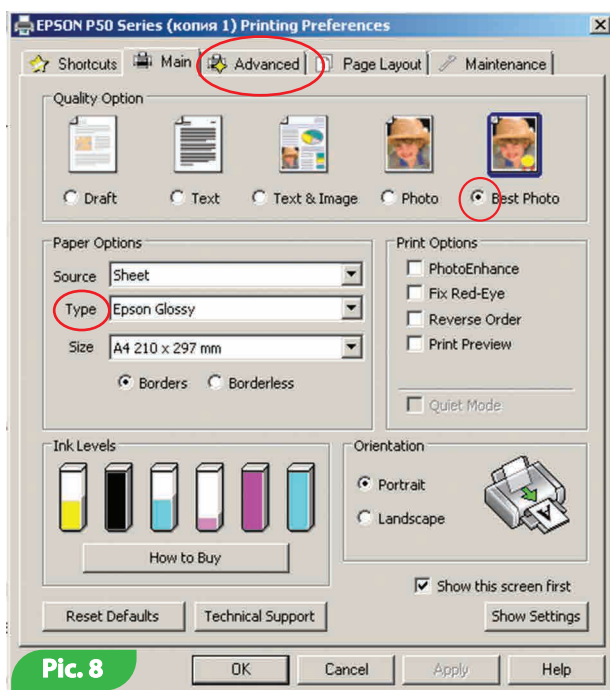
2) In the "Media Type" select "Glossy Photo Paper" or "Matte Photo Paper", it's depends on your tupe of photo paper (Pic. 8, 9)

3) In the "Quality Options" select "Best Photo" (Pic. 8, 9)

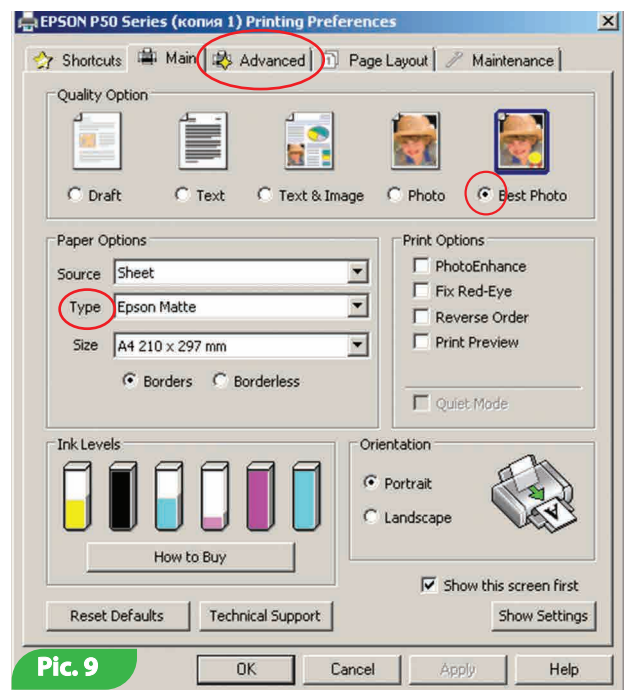
4) Select the tab "Advanced".

5) Under "Color Management" select "ICM" and be sure to put a checkmark in "Off. (No Color Adjustment)" (Pic. 10, 11)

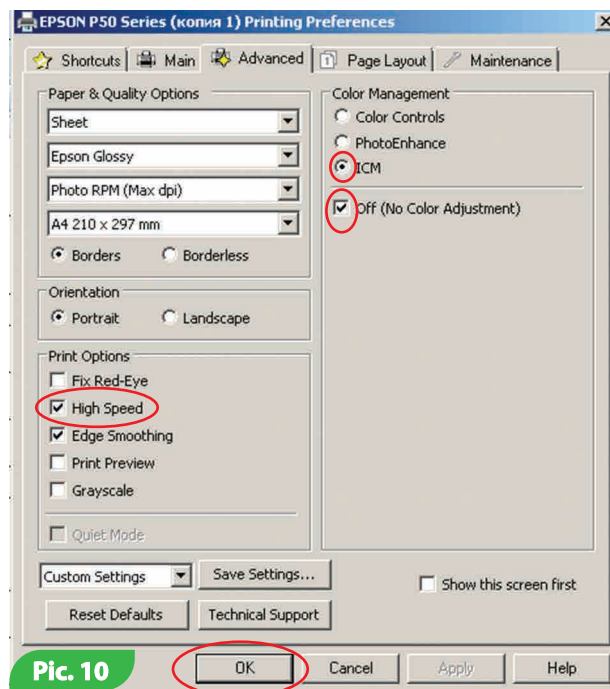
6) In the "Print Options" put a checkmark in the "High Speed". (Pic. 10, 11)



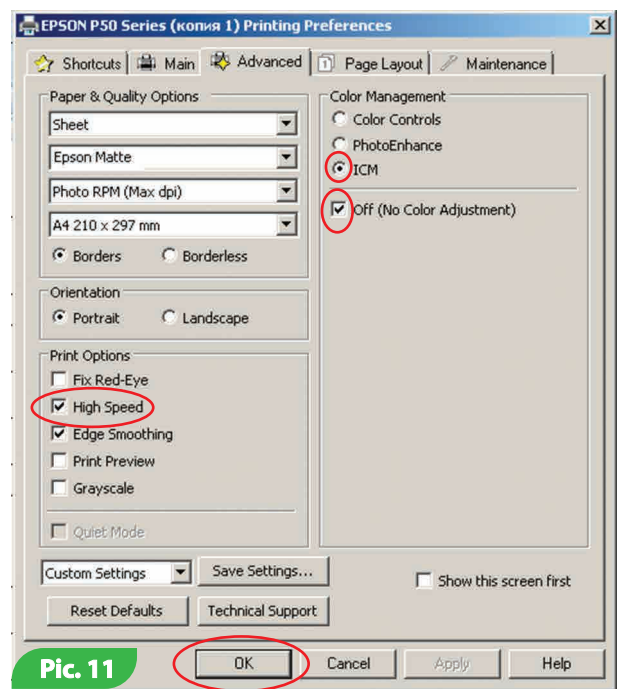
Pic. 8



Pic. 9



Pic. 10



Pic. 11

FOR prinners and MFPs HP

For printing on High Glossy, Premium High Glossy, Silky Glossy, Semi-Glossy, Satin, Dual-Sided High Glossy, Textured Glossy, Matte, Dual-Sided Matte and Textured Matte photo paper (Pic. 13)

- 1) Go to the tab "Printing Shortcuts"
- 2) Select the paper size according to the format of your paper
- 3) Click "Photo Printing - Borderless"

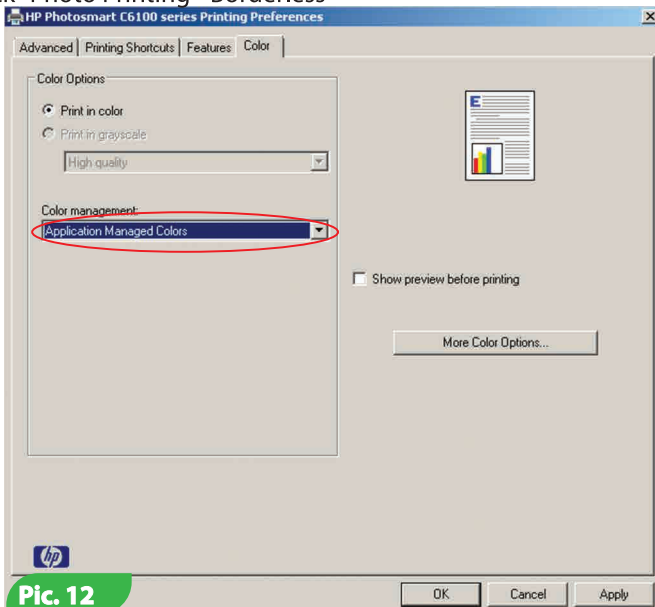
4) Paper Type, select "HP Advanced Photo Papers"

5) Print Quality select the "Best"

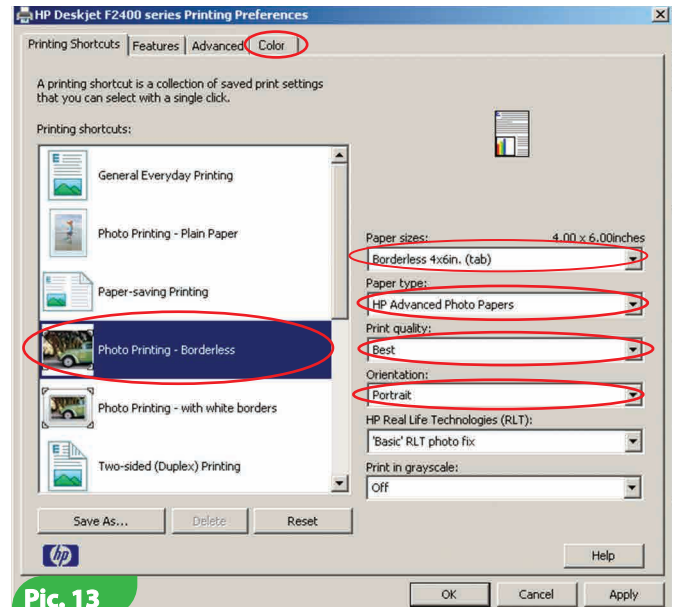
6) Orientation, select "Portrait"

7) Next, go to the tab "Color"

8) Paragraph Color Management, select "Application Managed Colors", as shown in Pic. 12



Pic. 12

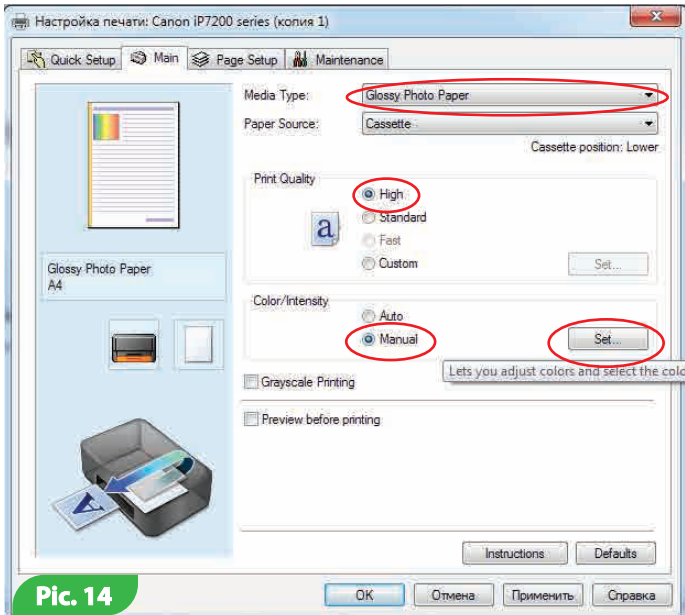


Pic. 13

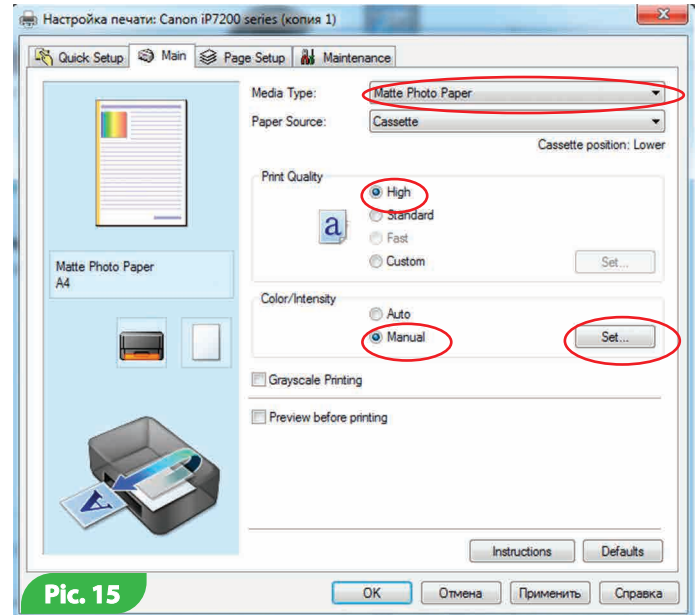
FOR printers and MFPs Canon

For printing on High Glossy, Premium High Glossy, Silky Glossy, Semi-Glossy, Satin, Dual-Sided High Glossy, Textured Glossy photo paper (Pic. 14)
For printing on Matte, Dual-Sided Matte and Textured Matte photo paper (Pic. 15)

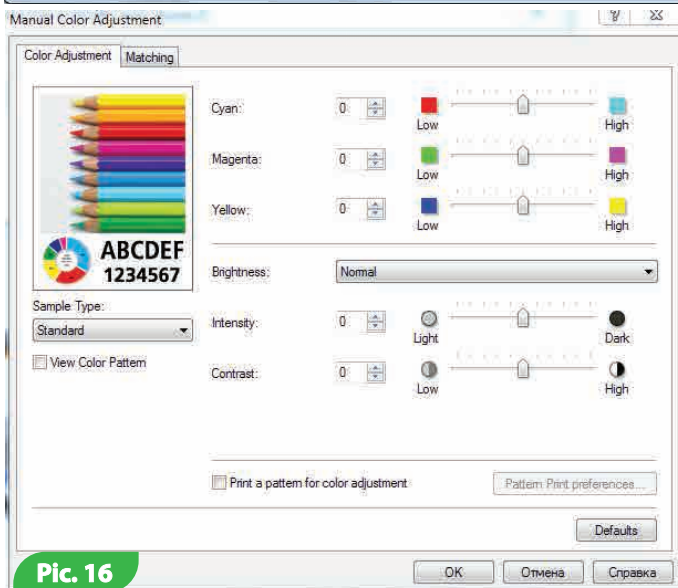
- 1) Select the paper size according to the format of your photo paper
- 2) Go to the tab "Main"
- 3) In the "Media Type" select "Glossy Photo Paper" or "Matte Photo Paper", it's depends on your tupe of photo paper (Pic. 14, 15)
- 4) In the "Print Quality" select "High" (Pic. 14, 15)
- 5) In the "Color/Intensity" select "Manuall" and click "Set" (Pic. 14, 15)
- 6) Go to the tab "Matching" and in the "color correction" select "None", as shown in Pic. 16, 17
- 7) Press button "OK" (Pic. 17)



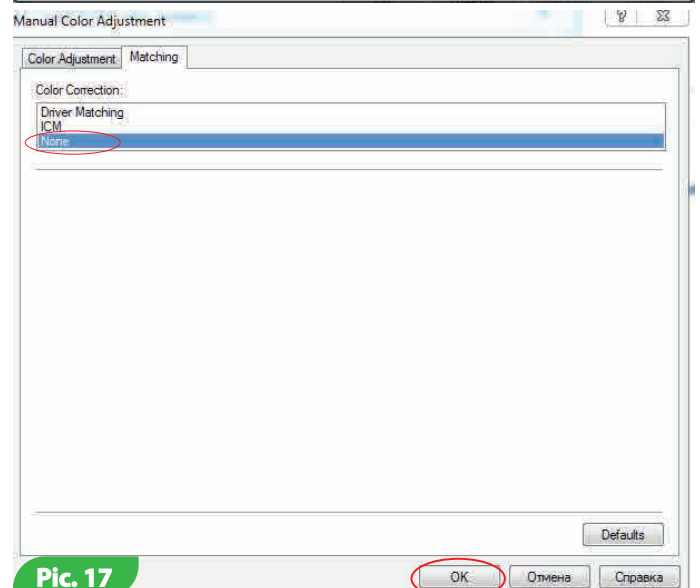
Pic. 14



Pic. 15



Pic. 16



Pic. 17