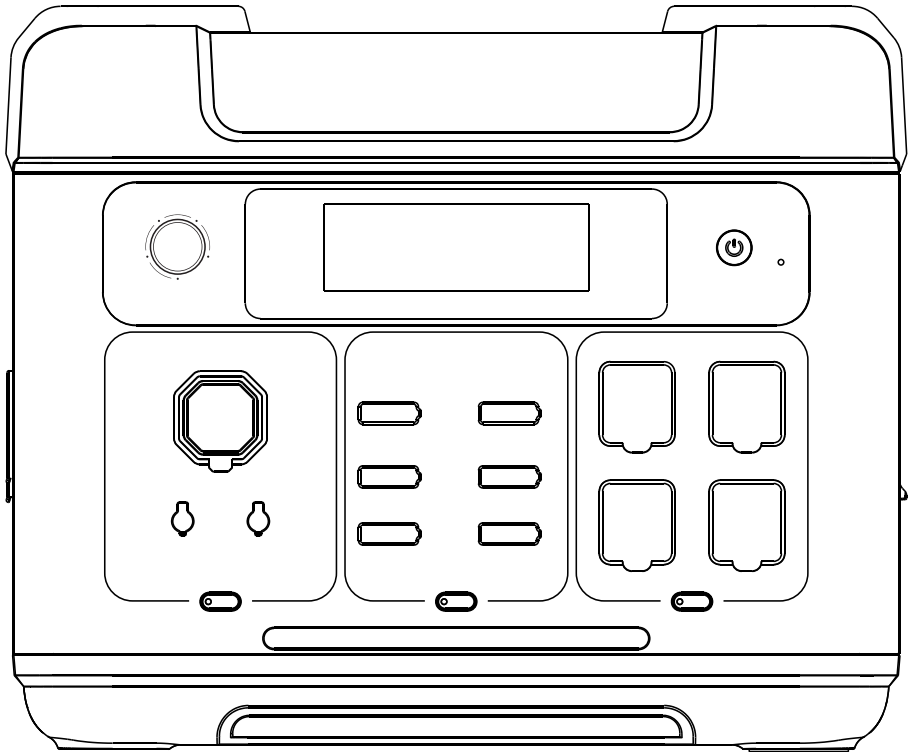


Charging Station



USER MANUAL CW-PR-2K2W-01



We sincerely thank you for purchasing the ColorWay Portable Charging Station. Please make sure to carefully read this instruction before using the product to ensure proper use.

To ensure the safety of the product during transportation, the battery is only charged to about 30%. **You need to charge the charging station after unpacking and before using it.**

Please avoid using extension cords or power strips, as the charging station can be charged directly from outlets. When using two or more outlets for charging, avoid using any other devices on the same outlet.

CONTENTS

SAFETY MEASURES.....	2
DISCLAIMER.....	2
SAFETY MEASURES DURING USE.....	2
PACKAGE CONTENTS.....	3
SPECIFICATIONS.....	3
PRODUCT DESCRIPTION.....	3
OPERATION.....	3
LCD SCREEN INDICATORS.....	5
UPS MODE.....	6
CONNECTING SOLAR PANELS.....	6
CAR CHARGING.....	7
SPECIFICATIONS.....	8
FREQUENTLY ASKED QUESTIONS.....	9
MAINTENANCE.....	9
MOBILE APP.....	10

SAFETY MEASURES

DISCLAIMER

Before using the product, carefully read the user manual to fully understand it before use. After reading, please keep the user manual in a safe place for future reference. Improper use of this product can result in serious injury to you or others, as well as damage to the product and property. After using this product, it is considered that you have understood, acknowledged, and accepted all the terms of this manual. Users are responsible for their actions and all possible consequences that may arise from them. Our company is not responsible for any damage caused by users not following the instructions outlined in this user manual. To comply with laws and regulations, the company reserves the right to the final interpretation of this document and all related documents for this product.

SAFETY MEASURES DURING USE

1. Always turn off the power source before performing any electrical work. Do not wash the device with water.
2. Please avoid high temperatures and humidity. Avoid using the product under direct sunlight or near fire.
3. Do not disassemble or modify the product as this may lead to malfunction or even fire.
4. Dispose of or recycle the product according to the methods established by local laws.
5. Be careful not to drop the product from a height or expose it to strong impacts.
6. Store or use the product out of the reach of children.
7. Use the company's original accessories. Customers who use non-original products and face negative consequences will not be eligible for free warranty service.
8. Do not obstruct the cooling of the product during use. Ensure that there is a ventilation space of more than 30 cm from the side suction and exhaust port.
9. When the product is not in use, turn it off and disconnect the power cord.
10. Avoid storing the product in places with high temperatures, high humidity, and direct sunlight.
11. If you need to store the product for an extended period, discharge it every 3 months and then charge it to approximately 50%.
12. If you have doubts that the product casing, auxiliary cable, or connected equipment has defects, do not continue to use the product. Instead, contact after-sales service personnel for timely problem resolution.
13. Do not store the product for a long time in a car, field warehouse, or other places that may be exposed to extremely high or low temperatures to prevent battery life reduction and other failures.
14. Do not move the device while it is operating; please turn off the device before moving it.
15. To reduce the risk of electric shock, disconnect all wiring before attempting any maintenance or cleaning. Turning off the device does not reduce the risk of electric shock.
16. Grounding instructions - This equipment should be connected to a permanently grounded electrical wiring. Be sure to follow local requirements and regulations for using this device.
17. Follow the manufacturer's restrictions listed in more detail at ColorWay Limitations. <https://colorway.com/limitations>

PACKAGE CONTENTS



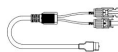
Portable charging station - 1



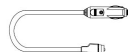
Power cable - 1



User manual - 1



XT60-MC4 Solar charging cable - 1



XT60 Car charging cable - 1

SPECIFICATIONS



Battery

Li-Ion (LiFePo4)
51.2B 2048 Wh



Cycle Life

≥3500



Weight

22 Kg



Dimensions

406x287x327,6 mm



Car Cigarette Lighter Port -1

DC 12B/10A



USB (A) - 2



USB (C) - 2



USB (C) - 1



USB (C) - 1



DC Output - 2

DC QC3.0 18W

DC PD20W

DC PD45W

DC PD100W

DC 12B/3A



UPS Mode



AC Output - 4



Charging Time

AC 220-240V
2000W (Max.)
Bypass 10ms

AC 220-240B
50/60Hz
2400W (Total Max)

AC 1800W
80% ≈ 50 min
100% ≈ 85 min



AC Input

200-240B/15A
1800W (Max)



PV/DC Input

DC 12-60B
500W (Max)

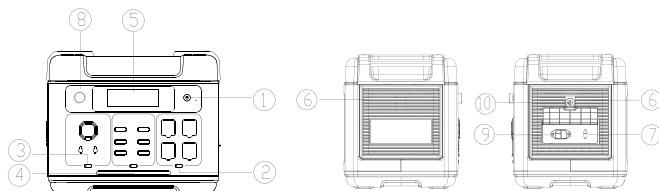
PRODUCT DESCRIPTION

This product is a portable power source suitable for backup power supply at home, during outdoor travel, and in emergency situations where power is needed. Additionally, it can be used for outdoor work and other purposes. The product features a built-in lithium iron phosphate (LiFePO4) battery, which supports fast charging from AC power, car charging, and charging from solar photovoltaic panels.

This product also includes an Uninterruptible Power Supply (UPS) function, allowing it to switch to powering electrical equipment within 10 milliseconds in the event of a power outage. The AC output of this product provides a pure sine wave, and if necessary, the frequency can be manually switched from 50 Hz to 60 Hz.

OPERATION

1. Power Station Switch
2. AC Output Switch
3. DC Output Switch
4. USB Output Switch
5. LCD Screen
6. Ventilation Grille
7. PV/DC Input
8. AC Charging Power Regulator
9. AC Input
10. Overload Protection



1. Power Switch of the Station

Usage Instructions: Press and hold the power button for 3 seconds to activate the system and turn on the LCD display. To turn off the power system, press and hold it again for another 3 seconds.

2. AC Output Switch

AC switch (AC output port *4, total electrical load must be less than 2400 W)

- AC voltage and frequency standards vary by country. Please check the voltage and frequency of the equipment before use.
- Press and hold the AC button + USB button for 3 seconds to switch the frequency.
- Pressing the AC button 10 times in a row will switch the AC output voltage to 220/230/240 V (EU).

3. DC Output Switch

Usage: Press the DC button briefly to turn on the DC output ports, and press the button again briefly to turn them off.



DC Output – 2

Cigarette Lighter Port – 1

4. USB Output Switch

Usage: Press the USB button briefly to turn on the USB output ports, and press the button again briefly to turn them off.



USB [A] – 2
5V/2.4A

USB [C] – 2
PD 20W

USB [C] – 1
PD 45W

USB [C] – 1
PD 100W

5. LCD Screen

Displays the power level and product usage.

6. Ventilation Grille

The cooling fan starts automatically when the product reaches a certain temperature during use. Avoid blocking the intake/exhaust of cooling air and do not place objects within 30 cm of the intake/exhaust during use.

7. PV/DC Input

The station can be charged by connecting a solar panel using a standard charging cable for the PV/DC port.

- The input power of the solar panel can be up to 500 W, with a maximum voltage of 60 V.
- If the PV/DC input port is charged with a voltage exceeding 60 V, the station will be damaged. This malfunction is not covered by warranty.

8. AC Charging Power Regulator

Turn the knob to the appropriate mark to obtain the desired AC charging power. Available charging powers are 300 W, 600 W, 900 W, 1200 W, and 1800 W; higher power levels may result in increased noise from the cooling system.

9. AC Input

After connecting a power source to the AC charging port using a standard AC charging cable, you can charge this product. Before using the AC port for charging, ensure that the AC voltage and frequency of the device match the grid.

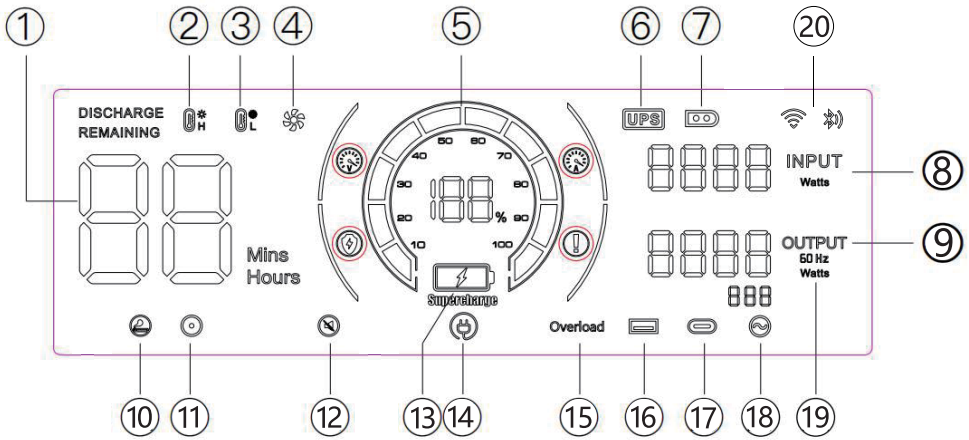
10. Overload Protection

In case of unstable power voltage from the grid due to lightning or other reasons, or if high voltage is applied to the AC input, the overload protection function (circuit breaker) is activated to protect the station and disconnect the AC input port from external devices.

To restore the AC input function of this product, follow these steps:

- Turn off the power button and disconnect all ports.
- Once you ensure that all components are functioning correctly, turn on the power button.
- Press the overload protection button and reconnect the AC cable to restore the AC input.

LCD SCREEN INDICATION



- | | |
|--|-------------------------|
| 1. Usage Time/Charging Time | 11. DC Output (12 V) |
| 2. High-Temperature Protection | 12. Silent Mode |
| 3. Low-Temperature Protection | 13. Fast Charging Mode |
| 4. Fan Status | 14. Slow Charging Mode |
| 5. Power Status | 15. Overload Protection |
| 6. Uninterruptible Power Supply (UPS) Mode | 16. USB Output |
| 7. Solar Charging Mode (PV) | 17. PD Output |
| 8. Total Input Power | 18. AC Output |
| 9. Total Output Power | 19. Frequency Switching |
| 10. Cigarette Lighter Output (12 V) | 20. WIFI/Bluetooth |



When this icon is turned on, please ensure that the air intakes on both sides of the product are not blocked.



When the indicator icon is flashing, it means that the internal temperature of the station is too high or too low. At this time, the intelligent protection program is activated, causing the station to stop normal operation. **Wait until the temperature in the station returns to a normal level before you can resume operation.**



When the indicator icon is flashing, it means that the power input is faulty. Please check the connection of the charger.



When this icon is flashing, it means that the output of the corresponding port is abnormal (overloaded). Please check the load situation.



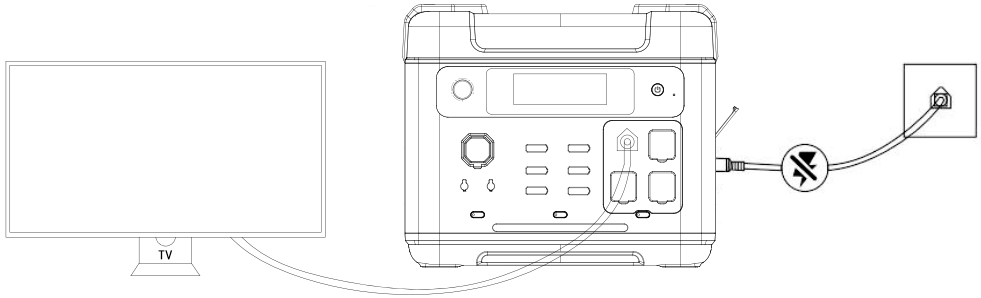
Press and hold the USB button for 2 seconds to enter silent mode. Double-click the AC button to enter constant power mode.

UPS MODE (UNINTERRUPTIBLE POWER SUPPLY)

The station has a bypass mode that allows output directly from the AC grid without needing to go through the battery. In UPS mode, when the city AC power is suddenly interrupted, the station can automatically switch to battery power within 10 ms, ensuring the normal operation of AC equipment.

UPS Connection Diagram

As shown in the image below, the product connects between the outlet and electrical devices, and the product's power is turned on.



After the electrical device is turned on, it directly uses AC power from the city grid. When the power supply is interrupted in this state, the device automatically switches to power from the internal battery.

If the maximum AC output power is less than 2000 W and the AC output exceeds 2000 W, the UPS icon will flash, indicating an overload, and when the AC icon turns off, the output will be interrupted.

Attention! In charging and discharging mode, due to input current limitations, discharge power takes priority. Therefore, as the load power increases, the charging power will decrease. When the load current reaches 12 A, the charging power will be limited to 100 W. If the output load power exceeds the maximum input power, overload protection will be activated.

CONNECTING SOLAR PANELS

The charging station can be connected to a solar panel* and charged from it. With a solar panel power of 500 W and at least 4 hours of sunlight, a full charge can be achieved (the maximum charging power from the solar panel is 500 W, and the maximum input voltage is 60 V).

- The charging power of the solar panel depends on factors such as weather, climate, and other conditions affecting power output.

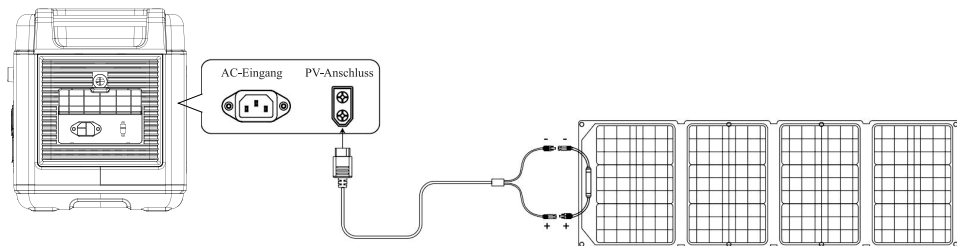
*Not included in the package.

Attention! Before connecting, please ensure that your solar panels meet the following specifications:

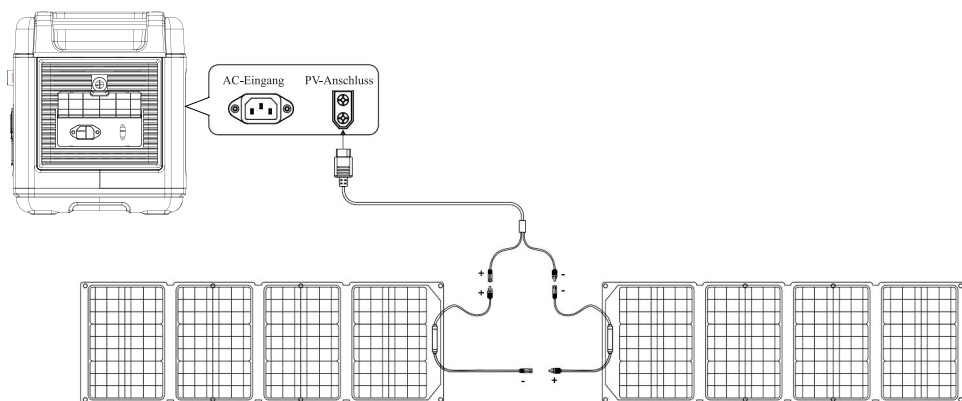
- **Open Circuit Voltage (Voc):** 12 to 60 V. Solar panel voltage exceeding 60 V may damage the device and void the warranty.
- **Peak Power (Pm):** 500 W Max.
- **Short Circuit Current (Isc):** 10 A Max.

Solar Panel Connection Diagram

Option 1



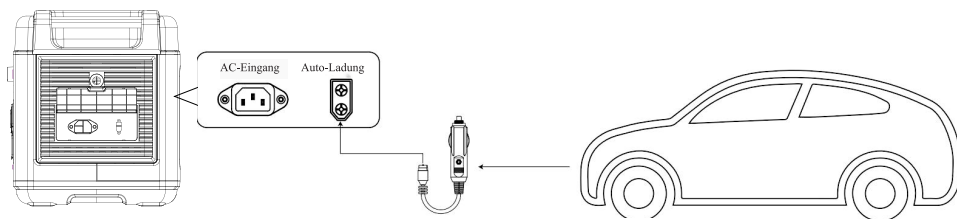
Option 2



CHARGING FROM A CAR

The charging station can be charged from the car's cigarette lighter using an ACC charging cable for mobile devices. Turn on the product, connect the ACC charging cable to the car's cigarette lighter and the Anderson connector on the side of the product, start the car engine, and the station's LED will indicate input from PV. The LED display will show the input power.

- Charging the onboard device should be done with the car engine running. If the engine is not started, it may lead to the car battery discharging.
- Onboard charging typically has low power (90-240 W) and a long charging time (12 V/8 A or 24 V/10 A). If fast charging is needed, it is recommended to charge from the power grid.



SPECIFICATIONS

Model	CW-PR-2K2W-01
Size	406x287x327,6 mm
Weight	Net Weight: 22 kg, Gross Weight: 26 kg
Battery	
Battery Type	Li-Ion (LiFePO ₄)
Nominal Battery Voltage	51.2V
Battery Capacity	40Ah 2048W
Charge Cycles	>3500
AC Input	
AC Input	AC 200-240V/15A, 1800W Max
UPS Mode (for AC Outputs only)	Bypass Mode AC Input: 220-240 V, 2000 W Max. Switching Time: 10 ms
Adjustable Charging Power	300B _T /600B _T /900B _T /1200B _T /1800W
DC Input	
PV/DC Input – Cigarette Lighter	DC 12V/8A, 24V/10A
PV/DC Input – Solar Panel	DC 12-60V/10A, 500W Max
AC Output	
Rated Power	2400W
Peak Power	Peak Power: 4800 W (2400 W ≤ load < 2450 W @ 1s; 4800 W ≤ load @ 0.5s)
AC Output	Outputs: 4 x AC 200-240 V, 50/60 Hz, Pure Sine Wave
Inverter Efficiency	Maximum Efficiency (η): 90%
DC Output	
USB (A)	2xDC QC18W 3.0 5V/3A, 9V/2A, 12V/1,5A
USB (C)	1xDC PD100W 5V/3A, 9V/3A, 12V/3A, 15V/3A, 20V/5A 1xDC PD45W 5V/3A, 9V/3A, 12V/3A, 15V/3A, 20V/2,25A 2xDC PD20W 5V/3A, 9V/3A, 12V/3A, 15V/2A, 20V/1,5A
DC5521 Output	2xDC 12V/3A
Cigarette Lighter Port	1xDC 12V/10A, 24V/10A
Operating Conditions	
Working Temperature	0-40 °C
Storage Temperature	-10-40 °C
Humidity	10-90%
Charging Time	
AC Input	1800 W Max.: 80% ≈ 50 min, 100% ≈ 85 min
AC Input + Solar Panel	2300 W Max.: 80% ≈ 40 min, 100% ≈ 65 min
Solar Panel	500 W Max.: 100% ≈ 4 h 30 min
Warranty:	24 months. More details www.colorway.com/page/warranty

FREQUENTLY ASKED QUESTIONS

1. How can I tell if my devices will work well with this product?

- Try to assess the total constant load of your devices. If it does not exceed the maximum output power of the station (2400 W), you can use this power station to supply your devices. Note that some devices with built-in motors or compressors may start with a power requirement 2-4 times higher than their rated power, which can easily overload the station.

2. The device's power is within the rated output power range, but it cannot be used?

- The product's battery charge is low and needs to be recharged.
- The peak power when starting some electrical appliances exceeds the product's power rating, or the rated power of the appliance exceeds the product's power rating.

3. Why is there noise during operation?

- The noise comes from the fan or relay when you start or use the product.

4. Is it normal for the charging cable to get warm during use?

- Yes, this is normal. The cable meets national safety standards and has the appropriate certifications.

5. What type of battery do we use in this product?

- The battery type is lithium iron phosphate (LiFePO₄).

6. How can I know the remaining usage time?

- Please check the data on the screen; it will show the remaining usage time when you turn on the device with connected equipment.

7. How can I know the remaining usage time?

- When the station is charging, the screen displays the input power, and the percentage power indicator blinks.

8. How do I clean the product?

- Please use a dry, soft, clean cloth or wipe to clean the product.

9. How should I store it?

- Disconnect all cables, turn off the product, and place it in a dry location. Do not place this product near water. For long-term storage, we recommend using the device every three months (first discharge the remaining charge and recharge it to the desired percentage, for example, 50%).

10. Can I take this device on a plane?

- NO, you cannot.

11. Does the actual output power of the product match the specifications in the user manual?

- The capacity stated in the user manual is the nominal capacity of the product's battery. Since this product has a certain loss of efficiency during the charging and discharging process, the actual output capacity of the product is lower than the capacity stated in the user manual.

12. What is the maximum output power of a single AC interface?

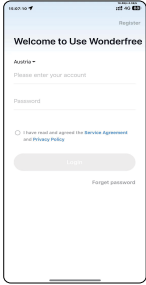
- Each interface of the product is marked with a maximum output current, and the maximum output power of the interface can be calculated according to the local output voltage and maximum current. The load power must not exceed the maximum output power that a single interface can handle. Failing to comply with this requirement may damage the product.

MAINTENANCE

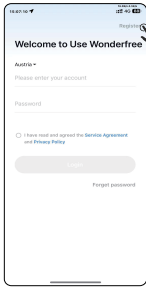
1. It is recommended to use or store this product at a temperature between 20°C and 30°C, away from water, heat, and other metal objects.
2. For safety reasons, please do not store this product at temperatures above 45°C or below -10°C for extended periods.
3. If the battery is not used for a long time, please charge it to 60% before storing. If the battery is not used for an extended period and is seriously discharged, it may lead to irreversible damage to the battery and reduce the product's lifespan.

MOBILE APP

INSTALLATION, REGISTRATION, AND LOGIN



For iOS users, open the App Store and search for the "Wonderfree" app. After downloading and installing the app, you can open the login interface.
For Android users, please open the Google Play Store and search for the "Wonderfree" app. After downloading and installing the app, open the app to access the login interface.



Account registration and login in the app are done via email. To register and log in: tap "Register" in the upper right corner of the login screen. Select the appropriate country or region, enter your email address, input the received verification code, set a password, and complete the registration. After registration, make sure the country selected during login matches the country chosen during registration. Once logged in successfully, the app will display the device list interface.

CONNECTION, SETUP, AND USE

Connection and Setup

Bluetooth is required when using the app. Ensure that Bluetooth is enabled on your phone and that the app has access to location information while in use. The setup process for the app and the station consists of two steps: A. Searching and B. Connecting.

A. Searching:

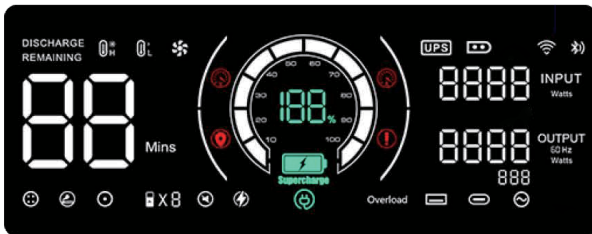


1. Press the USB button ten times in succession until you hear a "Di" sound, and the network icon on the LCD screen starts blinking.
2. Press the "IoT" port with a needle or another sharp object until the following occurs:

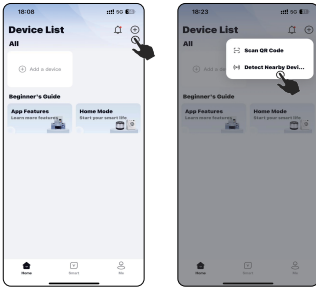
Blinking: Waiting for connection.

Solid: Connection successful.

No Wi-Fi / Network Icon: Network function disabled / No network function.

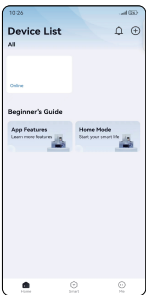
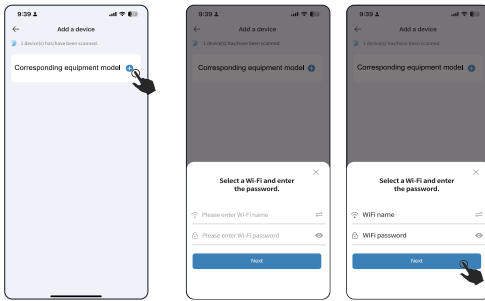


3. Tap the "+" button in the upper right corner of the device list interface in the app and select "Detect Nearby Devices." The app will display the devices that can be configured.



B. Connect:

Press the "+" button, enter the Wi-Fi network name and password you want to connect to, then select "Next" and wait for the progress indicator to load.



Main functions of the program

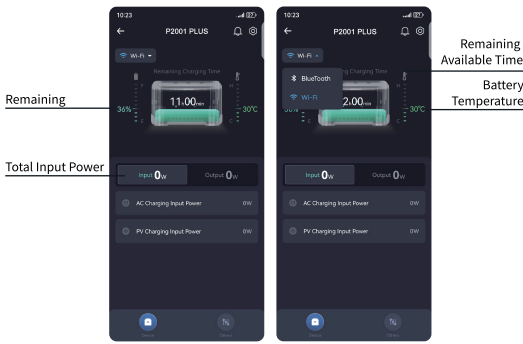
Click the icon of the connected device to access the main control panel.



Click "Output" in the main interface, and the following options/functions will be displayed:

1. Output
2. AC Information
3. USB Information
4. Type-C Information
5. DC Information

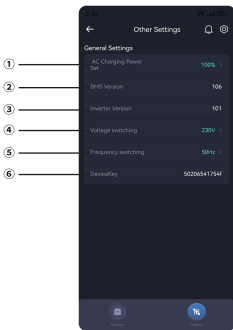
Total output power (including AC, USB, Type-C, DC)
 Displays the AC output power.
 Displays the USB output power.
 Displays the Type-C output power.
 Displays the DC output power.



In the "Input" section, the following options/ functions will be displayed:

1. Battery charge remaining in percentage.
2. Theoretical remaining runtime of the power station based on current output power and battery charge.
3. Battery cell temperature.
4. Total input power, including AC input power and DC input power (photovoltaic).

Other Functions of the Program
 Click "Other" on the bottom panel to navigate to the page of additional functions.

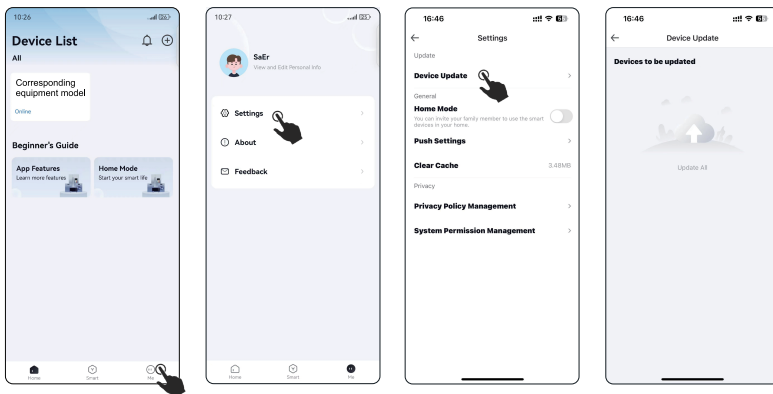


1. Charge Level Settings The station can be charged to 100%. If necessary, users can adjust the AC charging power from 3% to 100%.
2. BMS Version BMS version of the board for this station.
3. Inverter Version Inverter board version for this station.
4. Voltage Switching AC output voltage level (for 110 V equipment, the voltage can be switched between 100 V, 110 V, and 120 V; for 220 V equipment, the voltage can be switched between 220 V and 230 V). Users can switch the voltage in the app as needed.
5. Frequency Settings If necessary, the AC output frequency can be switched between 50 Hz and 60 Hz.
6. Device Key Each power station has an independent module code for future remote updates and after-sales service.

UPDATES, SHARED ACCESS, AND REMOVAL

Updates

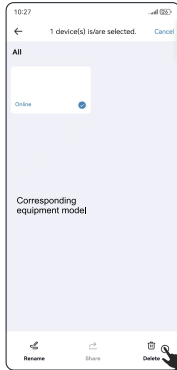
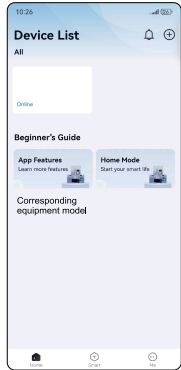
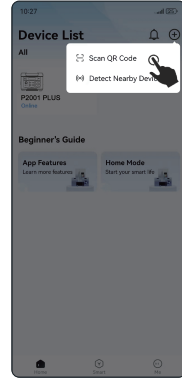
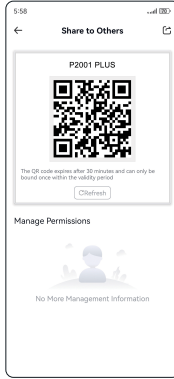
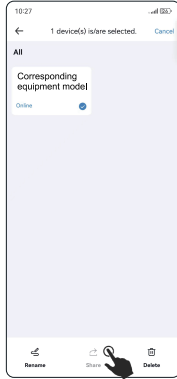
To enhance the device's convenience, users can receive firmware update notifications from the app while using the device. Users can tap "Me" at the bottom, go to "Settings," and select "Device Update" to view the update schedule. Relevant updates can be completed on the device update screen. After a successful update, users need to manually remove and reconfigure the device from the app.



Share

If the device is successfully connected, the app supports sharing the device with other mobile users using QR codes. The steps are as follows:

1. Open the device list and long-press the device icon. This will display a menu.
2. After selecting "Share," a QR code will be displayed. Other users can scan this code to add the device.

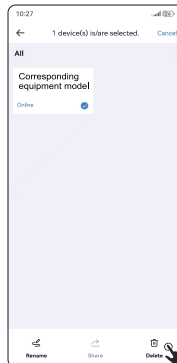
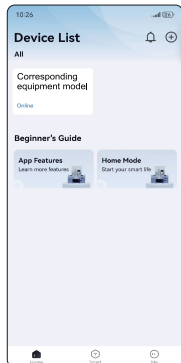


Rename and Delete Devices

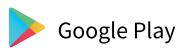
For added devices, you can change their names. Press and hold the device icon, and a menu will appear. Tap "Rename" to change the name or "Delete" to remove the device. If you need to re-add the device, follow the configuration process again.

SYSTEM SETTINGS (UPDATES, PUSH NOTIFICATIONS, PRIVACY, AND PERMISSIONS)

Tap "Me" at the bottom of the app to access the messaging interface. In this interface, you can perform the following operations:



- Settings: Device updates
- Push Settings: Enable/disable alarms, alerts, and error notifications
- Clear Cache
- Privacy Policy Management: You can view Brypathy's policy and the APP service agreement
- System Permissions Management: Enable/disable app access to the mobile phone, location, camera, and photo gallery



Wonderfree



Wonderfree

