

Universal installation instruction

Refill cartridges set Epson with separated ink cartridges.

Item code: SX130RC-X.X and SX525RC-X.X(v1.0En)

Refill cartridges for inkjet printers and MFU Epson models:

For **SX130RC**: S22, SX125/SX130/SX230/SX420/SX425/SX430/SX435/SX438/SX440/SX445/SX525, BX305.

For **SX525RC**: B42, SX230/SX235/SX420/SX425/SX430/SX435/SX438/SX440/SX445/SX525/SX535, BX305/BX525/BX620/BX625/BX635, WF7015/WF7515/WF7525

Thank you for purchasing Refill cartridges of TM ColorWay. We appreciate your support and we do our best for convenient usage of our products.

Refill cartridges set is a set of cartridges for inkjet printers modernization that can be used many times through ink refilling. The price of printing is lower in 25 and more times. Unlike to one time use cartridges our cartridges are for the whole life of printer. Your further costs are only purchase of inks for refilling.

Box Content

1. Refill cartridges with auto chips 4 pcs – 1 set
2. Syringe without needle - 4 pcs
3. Needle for refilling 4 - pcs
4. Manual 1 pc
5. Warranty card

The exterior product view and bundling may vary. Drawings and photos are presented in the manual to understand the general installation and operation process of Refill cartridges. The manufacturer reserves the right to change product specification, designs and bundling without prior notice.

Inks optionally: code-0.0 - (without inks), code-4.5 - (4 bottles of inks and each 50 ml), code-4.1 - (4 bottles of inks and each 100 ml)

1. Preparation for installation

Before installation please check the whole system and box content.

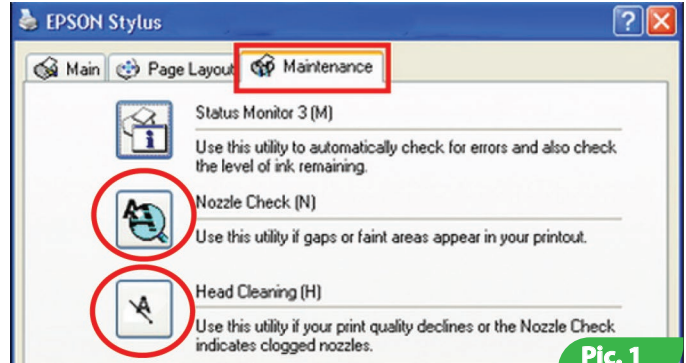
During the period of Refill cartridges usage please do not touch chips, do not let dust and liquids to make them broken.

Reminder! The fact that in a printer is used non original consumables can be used as a reason of warranty cancellation.
 Make sure that your printer is compatible with this system (list of compatible printer models is on a side label of box).

1.1. Before Refill cartridges installation please check the printer working condition: check that your printer work properly with original cartridges and everything is fine with paper supply mechanism and other printer mechanisms.

1.2. Please print test page to evaluate printer ability to work (Pic. 1). Start/Control panel/ Printers and Fax/Choose printer/Printer adjustment/Maintenance/Nozzle Chek. If the test is positive please start Refill cartridges installation, if the result is negative please follow the recommendations of cleaning the printing head with the help of printer software (Pic. 1). Maintenance/Printing head cleaning, if this does not give a positive result please service your printer in service center to repair your printer and cleaning of printing head.

1.3. All procedures are recommended to be organized in a way to avoid getting inks on furniture, clothes and other surfaces.



Pic. 1

Attention! If previously you have been using low quality inks or you change now pigment inks into dye inks or dye inks into pigment inks, before Refill cartridges installation we recommend to clean a printing head of printer. For this you need to fill Refill cartridges with liquid for cleaning a printing head of printer and after make 2-3 cleaning of printing head with a help of printer software, cleaning liquid presses out old inks from printing head and you can use a new inks. After this procedure please remove cleaning liquid from the cartridges and fill them with inks as described below. If you have been using original consumables or consumables of TM ColorWay then no need in cleaning, our inks is completely compatible with original inks and that is why during installation no need to clean printing head.

2. Cartridge filling

2.1. Open 2 holes on the top part of cartridge.

The hole N1 is for filling. Through this hole is organized ink filling. Filling hole should be closed during printing. The hole N2 is air hole. Through this hole during filling and printing the air comes in and out. After filling, during printing it should be opened.

2.2. Get ink in syringe with necessary color and put a needle on a syringe. If Refill cartridges set contains 50 ml inks with special nozzle you can use them without syringe and needle.

2.3. Put a needle (or special nozzle) in filling hole N1. Do not damage inside walls of cartridges.

2.4. Fill necessary quantity of inkjet ink in refill cartridges (Pic. 3)

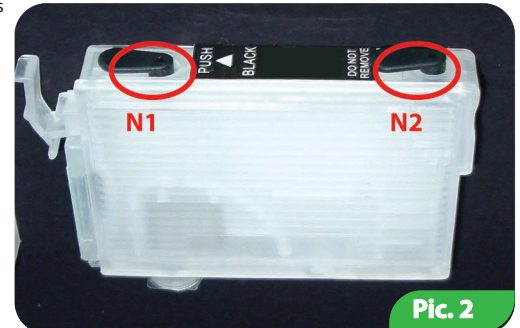
Control visually of cartridge filling through its translucent walls.

2.5. Do not let to fill with ink air tank of cartridge. If it happens, get in empty syringe air, put tightly a syringe without needle in air hole and then carefully get ink out of air tank (Pic. 4).

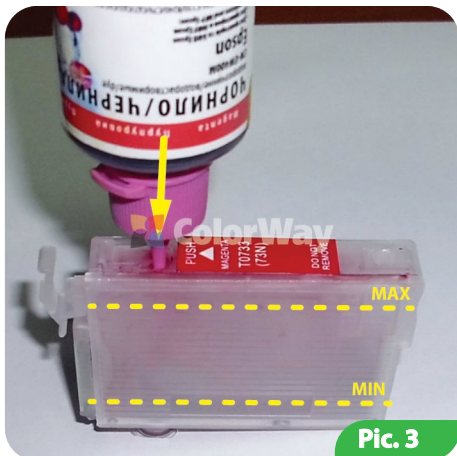
Excess of ink in air tank can lead to blots and streaks on printout.

2.6. Close filling hole N1 with a cap, a hole N2 please leave open.

2.7. Switch on printer (MFU). On printer press button Cartridge replacement Drib, after a carriage gets in replacement position. In MFU and printers with displays press Maintenance and Choose Cartridge replacement. Carriage with cartridge gets in replacement position. Also this operation can be organized via printer software. See printer manual, part Cartridge replacement.



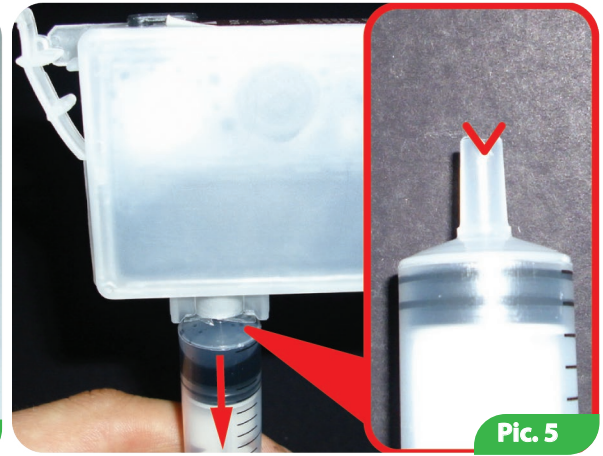
Pic. 2



Pic. 3



Pic. 4



Pic. 5

2.8. Put set of Refill cartridges in a printer. Do not remove membrane from cartridge nozzle, during installation the needle of printer punches it.

Note: some printer models require installation of all set of cartridges otherwise the printer do not recognize them.

2.9. Press again the button Drib. In MFU and printers with displays confirm the end of cartridge replacement.

2.10. Wait until all operations are done by printer and MFU and please wait until it is ready to work. If printer (MFU) does not recognize all cartridges please follow to recommendations described in part 4. Cartridge reset.

2.11. With a help of printer (MFU) software plz make 2-3 cleaning procedures and after print out nozzle test to make sure all nozzles print well (p.1.2. of manual). If some nozzles do not print well please leave printer for 5-10 hours during this time excessive air gets out and the pressure inside cartridge is stabilized.

2.12. If nozzles cleaning does not help please make cartridge pumping through lower nozzle. For this cut a bit a syringe nozzle (Pic. 5), put a syringe in cartridge and pull the plunger of syringe until ink is in syringe. (Pic. 5). When you put a syringe in cartridge, the syringe nozzle opens valve of cartridge and cut on syringe helps to come out of ink.

3. Cartridge refilling

Cartridge refilling is organized in accordance with start filling.

3.1. On a printer press button Cartridge Replacement Drib and carriage with cartridges gets in position of Cartridge replacement. In MFU and printers with displays please press Maintenance and choose Cartridge replacement and cartridge carriage gets in position Cartridge replacement. You can organize this procedure via software of printer.

3.2. Pull out the cartridge that you need to fill from the printer.

Refilling of cartridges without pulling them out from the carriage is not allowed since during refilling you may create excessive pressure and excess of ink may get in a printer and the most important in order to reset cartridge chip you need to pull them out from the carriage.

3.3. Repeat actions 2.1.-2.10. of part 2. Cartridge filling , of this instruction.

3.4. With a poor quality of printing please make 1-2 nozzles cleaning procedures of inkjet printer and then print out nozzles test.(p.2.11;2.12.).

4. Cartridge reset

Autochips only regulates virtual level of ink in Refill cartridges.

Virtual (electronic) level of ink is recognized by Epson printer ,this is the level that is identified by auto chip and you can see on display of printer software. It equals approx. to the volume of original cartridge. When appears the message of empty cartridge so it means this is virtual ink level but not a real level.

Real (Actual) level of inks can be recognized by you, that is ink level that actually is presented in cartridge.

You need to understand that after first refilling of cartridge, Virtual and Real levels are different. Virtual and Real levels can be approx. the same in new one time use cartridges.

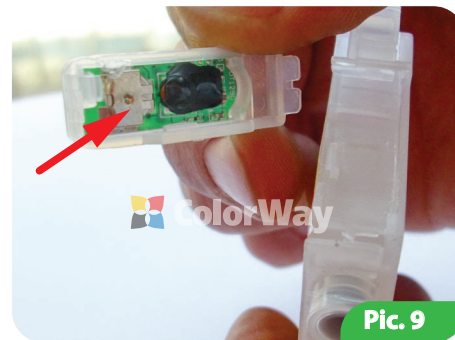
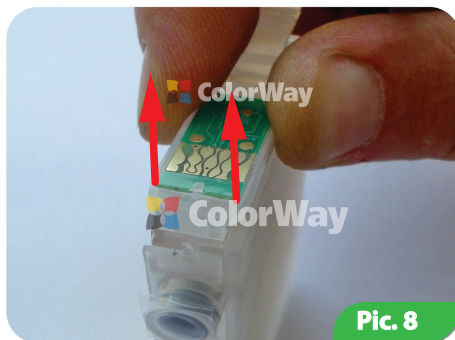
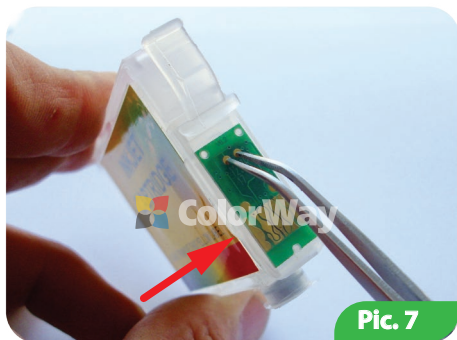
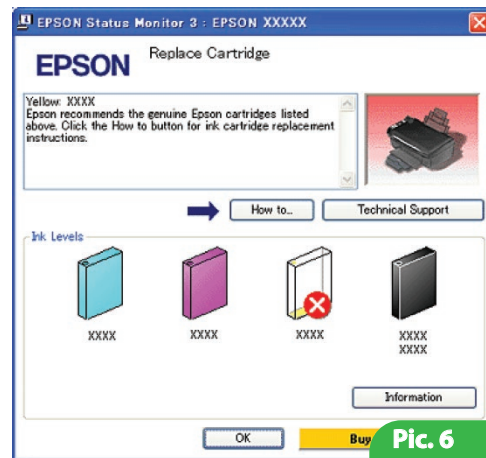
4.1. If printer (MFU) says that one of cartridges is empty or can't recognize it (Pic. 6), so in this case it is necessary to make reset of ink level. For this on a printer please press the button Cartridge replacement Drib, carriage with cartridges gets out and stops next to the cartridge that needs to be replaced, press button one more time and carriage gets in position Cartridge Replacement. In MFU and printers with displays carriage with cartridges gets in position Cartridge Replacement at once. Also you can organize this procedure via printer software, please see manual for the Printer.

4.2. When carriage with cartridges in position of Replacement, please pull out the cartridge. If it is necessary please refill it (part 3. Cartridge refilling).

4.3. **Auto chips have automatic reset when you pull them out from the printer more than 30 seconds** and under condition that printer software says it is time for cartridge replacement.

4.4. If you have a problem with cartridge reset, in this case you need to make forced cartridge reset. For twith a metal thing (clip, staple,tweezers or etc.) for 2 sec two top contacts of cartridge chip Pic. 7. Each cartridge chip has a battery on the back side that is for 6 months use. If forced reset does not help, you need carefully to remove the chip (Pic. 8) and replace battery (watch battery type A377). (Pic. 9). Please make sure you install cartridges properly untill click.

4.5. Printer (MFU) shows a message of empty cartridge when it consumed the ink volume that equals to the ink level of original cartridges.



5. Questions and answers.

5.1. Printer does not recognize cartridges

-make sure that all chips are properly placed on their places on a cartridge and there is no ink and dirt on them. Do not touch chips with your hands.

-make sure the cartridges are installed properly until click.

-install all set of refill cartridges;

-in position Cartridge replacement, pull out the cartridges from the printing head for 30 sec and put them in back.

-Install cartridges one by one and controlling on display what cartridge does not work.

All procedures should be organized when the carriage of printer is in position of Cartridge replacement

5.2. Ink does not come to printing head:

-make sure that cartridges are filled properly and air holes are open

-pump cartridge via lower cartridge nozzle (p.2.12.)

5.3. Cartridge can't reset

-cartridge reset can be organized when printer driver says that cartridge is empty otherwise on a new printers no reset can be done.

-for reset you need to pull out empty cartridge (in some cases all cartridges) from the carriage for a 30 sec, when a carriage is in Replacement position and then put them in back, please continue to print.

Print not less than 1 time a week, do not keep Refill cartridges under direct sun light.

Use Refill cartridge of TM ColorWay in clean place with ait temperature 15-35 C.

Use ink that you used initially. Do not mix inks of different brands and types.

In some exceptional cases from the printer may come out used inks, in order to avoid this situation we advise to set Ink output, for more detailed information you can contact TM ColorWay.

During transportation or long-term storage, close air holes in Refill cartridges, do not get upside down printer with Refill cartridges. Do not get separated cartridges parts. In order to get the best quality use photo paper of TM ColorWay.

Important: keep inks out of reach of children; do not drink ink; keep ink away from your eyes.