

Thank you for purchasing Refill cartridges of TM ColorWay. We appreciate your support and we do our best for convenient usage of our products.

Refill cartridges set is a set of cartridges for inkjet printers modernization that can be used many times through ink refilling. The price of printing is lower in 25 and more times. Unlike to one time use cartridges our cartridges are for the whole life of printer. Your further costs are only purchase of inks for refilling.

Box Content

1. Refill cartridges with auto chips 4 pcs – 1 set
2. Syringe without needle - 4 pcs
3. Needle for refilling 4 - pcs
4. Manual 1 pc
5. Warranty card

The exterior product view and bundling may vary. Drawings and photos are presented in the manual to understand the general installation and operation process of Refill cartridges. The manufacturer reserves the right to change product specification, designs and bundling without prior notice.

Inks optionally: code-0.0 - (without inks), code-4.5 - (4 bottles of inks and each 50 ml), code-4.1 - (4 bottles of inks and each 100 ml)

1. Preparation for installation

Before installation please check the whole system and box content.

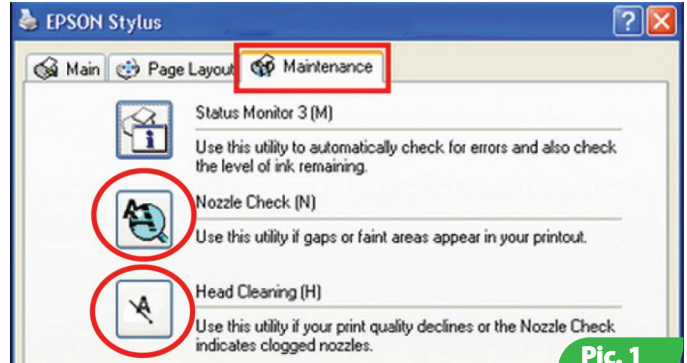
During the period of Refill cartridges usage please do not touch chips, do not let dust and liquids to make them broken.

Reminder! The fact that in a printer is used non original consumables can be used as a reason of warranty cancellation.
 Make sure that your printer is compatible with this system (list of compatible printer models is on a side label of box).

1.1. Before Refill cartridges installation please check the printer working condition: check that your printer work properly with original cartridges and everything is fine with paper supply mechanism and other printer mechanisms.

1.2. Please print test page to evaluate printer ability to work (Pic. 1). Start/Control panel/ Printers and Fax/Choose printer/Printer adjustment/Maintenance/Nozzle Check. If the test is positive please start Refill cartridges installation, if the result is negative please follow the recommendations of cleaning the printing head with the help of printer software (Pic. 1). Maintenance/Printing head cleaning, if this does not give a positive result please service your printer in service center to repair your printer and cleaning of printing head.

1.3. All procedures are recommended to be organized in a way to avoid getting inks on furniture, clothes and other surfaces.



Pic. 1

Attention! If previously you have been using low quality inks or you change now pigment inks into dye inks or dye inks into pigment inks, before Refill cartridges installation we recommend to clean a printing head of printer. For this you need to fill Refill cartridges with liquid for cleaning a printing head of printer and after make 2-3 cleaning of printing head with a help of printer software, cleaning liquid presses out old inks from printing head and you can use a new inks. After this procedure please remove cleaning liquid from the cartridges and fill them with inks as described below. If you have been using original consumables or consumables of TM ColorWay then no need in cleaning, our inks is completely compatible with original inks and that is why during installation no need to clean printing head.

2. Cartridge filling

2.1. Open 2 holes on the top part of cartridge. (Pic. 2)

The hole N1 is for filling. Through this hole is organized ink filling. Filling hole should be closed during printing. The hole N2 is air hole. Through this hole during filling and printing the air comes in and out. After filling, during printing it should be opened.

2.2. Get ink in syringe with necessary color and put a needle on a syringe. If Refill cartridges set contains 50 ml inks with special nozzle you can use them without syringe and needle.

2.2. Put a needle (or special nozzle) in filling hole N1. Do not damage inside walls of cartridges.

2.3. Fill necessary quantity of inkjet ink in refill cartridges (Pic. 3)

Control visually of cartridge filling through its translucent walls.

2.4. Close filling hole N1 with a cap (Pic. 4), a hole N2 please leave open. (Pic. 5).

2.5. Put set of Refill cartridges in a printer. (Pic.6; 7). Do not remove membrane from cartridge nozzle, during installation the needle of printer punches it.

Note: printer require installation of all set of cartridges otherwise the printer do not recognize them.

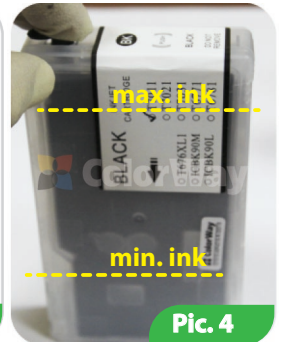
2.6. Wait until all operations are done by printer and MFU and please wait until it is ready to work. If printer (MFU) does not recognize all cartridges please



Pic. 2



Pic. 3



Pic. 4



Pic. 5



Pic. 6



Pic. 7

follow to recommendations described in part 3. Cartridge reset.

2.7. With a help of printer (MFU) software plz make 2-3 cleaning procedures and after print out nozzle test to make sure all nozzles print well (p.1.2. of manual). If some nozzles do not print well please leave printer for 5-10 hours during this time excessive air gets out and the pressure inside cartridge is stabilized.

3. Cartridge reset

Autochips only regulates virtual level of ink in Refill cartridges.

Virtual (electronic) level of ink is recognized by Epson printer, this is the level that is identified by auto chip and you can see on display of printer software. It equals approx. to the volume of original cartridge. When appears the message of empty cartridge so it means this is virtual ink level but not a real level.

Real (Actual) level of inks can be recognized by you, that is ink level that actually is in cartridge.

You need to understand that after first refilling of cartridge, Virtual and Real levels are different. Virtual and Real levels can be approx. the same in new one time use cartridges.

3.1. If printer (MFU) says that one of cartridges is empty or can't recognize it (Pic. 7), so in this case it is necessary to make reset of ink level. For this on a printer please press the button Cartridge replacement Drip, carriage with cartridges gets out and stops next to the cartridge that needs to be replaced, press button one more time and carriage gets in position Cartridge Replacement. In MFU and printers with displays carriage with cartridges gets in position Cartridge Replacement at once. Also you can organize this procedure via printer software, please see manual for the Printer.

3.2. When carriage with cartridges in position of Replacement, please pull out the cartridge. If it is necessary please refill it (part 3. Cartridge refilling).

3.3. **Auto chips have automatic reset when you pull them out from the printer more than 30 seconds** and under condition that printer software says it is time for cartridge replacement.

3.4. If there is a problem with cartridges reset, switch off and then in few minutes switch on printer. Pull out all cartridges for 2-3 minutes from the printer and then install them back, please make sure you install cartridges properly until click.

3.5. Printer (MFU) shows a message of empty cartridge when it consumed the ink volume that equals to the ink level of original cartridges.

4. Questions and answers.

4.1. Printer does not recognize cartridges

-make sure that all chips are properly placed on their places on a cartridge and there is no ink and dirt on them. Do not touch chips with your hands.

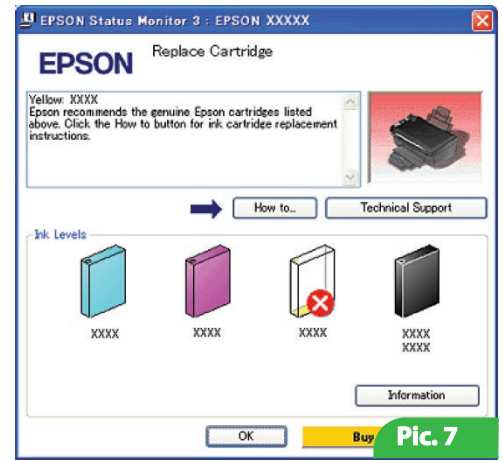
-make sure the cartridges are installed properly until click.

-install all set of refill cartridges;

-Install cartridges one by one and controlling on display what cartridge does not work.

4.2. Ink does not come to printing head:

-make sure that cartridges are filled properly and air holes are open



Print not less than 1 time a week, do not keep Refill cartridges under direct sun light.

Use Refill cartridge of TM ColorWay in clean place with air temperature 15-35 C.

Use ink that you used initially. Do not mix inks of different brands and types.

In some exceptional cases from the printer may come out used inks, in order to avoid this situation we advise to set Ink output, for more detailed information you can contact TM ColorWay.

During transportation or long-term storage, close air holes in Refill cartridges, do not get upside down printer with Refill cartridges. Do not get separated cartridges parts. In order to get the best quality use photo paper of TM ColorWay.

Important: keep inks out of reach of children; do not drink ink; keep ink away from your eyes.